



The University of  
**Nottingham**

UNITED KINGDOM · CHINA · MALAYSIA

**For general International Student enquiries,  
please contact:**

International Office  
The University of Nottingham Malaysia Campus,  
Jalan Broga, 43500 Semenyih,  
Selangor, Malaysia.

t: +6(03) 8924 8778 / 8000

f: +6(03) 8924 8005

e: [international.enquiries@nottingham.edu.my](mailto:international.enquiries@nottingham.edu.my)



UNMCIntOffice



UNMCIntOffice



The University of  
**Nottingham**

UNITED KINGDOM · CHINA · MALAYSIA

## International Student Guide 2013/2014

[www.nottingham.edu.my](http://www.nottingham.edu.my)

The University of Nottingham Malaysia Campus

International Student Guide 2013/2014





# Contents

## Introduction

Welcome Message	3
The University of Nottingham	5
Accolades	7
International Campus	9
Nottingham and Malaysia	11

## How to...

Apply	59
Finance your degree	61
Apply for accommodation	63
Find us	67
Contact us	71

## Nottingham Malaysia Life

On Campus	13
"Selamat Datang"	15
International Office	17
Overseas opportunities	19
Resources for success	21

## Nottingham Malaysia programmes

Foundation courses	25
Faculty of Arts & Social Sciences	33
Faculty of Engineering	43
Faculty of Science	49
MPhil / PhD	57





**“The University of Nottingham has had ties with Malaysia for more than five decades. The University has been involved in the education of many prominent members of Malaysian society, such as former Kings, government Ministers, and prominent leaders of business and industry.”**

---

## Welcome Message

The University of Nottingham has had ties with Malaysia for more than five decades. The University has been involved in the education of many prominent members of Malaysian society, such as former Kings, government Ministers, and prominent leaders of business and industry.

The current Malaysian Prime Minister, Datuk Seri Najib Tun Razak graduated in Industrial Economics from Nottingham in 1974. Therefore, it was not surprising for the University to respond to the Malaysian Government's plans to establish Malaysia as a centre of excellence for higher education. The University of Nottingham Malaysia Campus was successfully set up and had its first intake in September 2000.

Currently, there are about 4,500 students in the Malaysia Campus, out of which 40 percent are international students. In this era of globalisation, The University of Nottingham Malaysia Campus provides the opportunity for students from around the world to obtain high quality British education economically and at the same time interact with each other in a truly multi-cultural setting.

The Malaysia Campus shares design themes which reflect our British counterpart, while retaining own unique characteristics. As the landscape matures, and new teaching and research facilities are added in the years ahead, the campus is increasingly lauded and loved by our resident communities.

We warmly welcome you to join our international community at the Malaysia Campus and enjoy a wonderful student life, experiencing British education in an ASIAN setting.





**The University of Nottingham began as an adult education centre in 1798 and later became an external college of the University of London. The University was granted its Royal Charter in 1948 – making Nottingham the first university to receive a Royal Charter after World War II.**

---

*The Sunday Times* says “A model of consistent excellence, Nottingham has been ranked between 8th and 12th in every edition of *The Sunday Times Good University Guide* over the past nine years. It identifies the university as one of the most desirable destinations in higher education with first-rate facilities, attractive campuses and the opportunity for some to study at Semenyih, near Kuala Lumpur in Malaysia, and Ningbo in China, where parallel courses are taught in English.”

Described by *The Times* as Britain’s “only truly global university”, it has invested continuously in award-winning campuses in the United Kingdom, China and Malaysia.

Prospective students often comment on how striking our individual campuses are. Between them, they offer a mix of parkland and traditional and futuristic architecture and are truly beautiful places to live and study.



# The University of Nottingham





- The University of Nottingham is ranked within the top 1% of all universities worldwide.
- The University of Nottingham Malaysia Campus (UNMC) has been rated 'excellent' or 'Tier Five' status in a national assessment of teaching and learning ranked by The Rating System for Malaysian Higher Education (SETARA).
- Member of the Russell Group, the Sutton Trust 13, Universitas 21, the Association of Commonwealth Universities and the European University Association.
- 'Entrepreneurial University of the Year' at the prestigious *Times Higher Education Awards 2008*.
- Remained in the Top 20 in *The Independent Complete University Guide 2010 and 2011*.
- Twice since 2003 its research and teaching academics have won Nobel Prizes.
- Queen's Award for Enterprise in 2006 (International Trade) and 2007 (Innovation – School of Pharmacy).
- In the recent independent assessment by the QAA, the University was awarded a rating of between 22 and 24, out of a maximum of 24, in a total of 39 subjects.
- In *The Times* and *The Guardian* league tables Nottingham has 29 academic schools / departments ranked in the Top 10 by subject, and 14 ranked in the Top 5.
- Students at Nottingham have been declared national winners of Students in Free Enterprise (SIFE) in 2005, 2006, 2007 and 2008. The latest Research Assessment Exercise (RAE) confirmed The University of Nottingham's position as a world class research-led institution. Over 60 per cent of the University's RAE scores identified research as being of a level of international excellence.
- The University of Nottingham is positioned 7th in terms of 'research power' in the 2008 UK RAE.

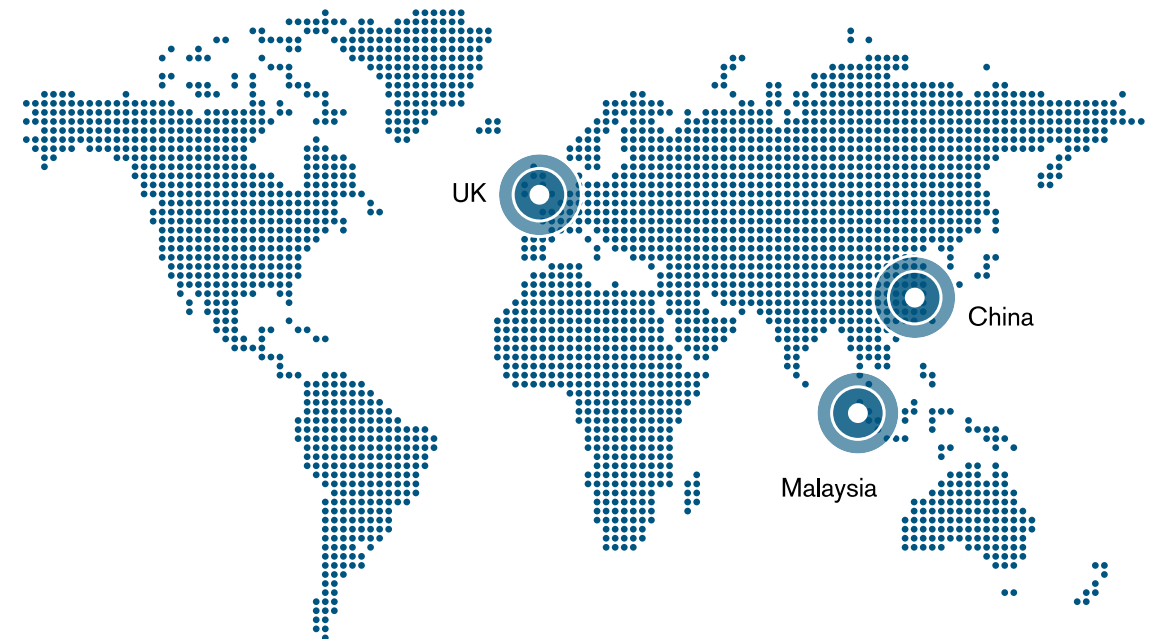
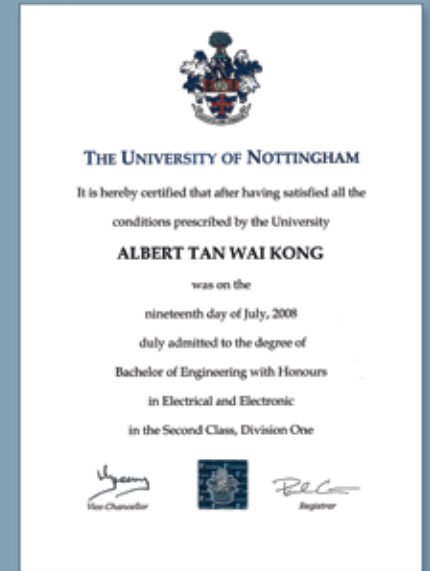
# Accolades



# International Campuses



Programmes at the Malaysia Campus and China Campus are identical to those offered at Nottingham, after which degree certificates from The University of Nottingham are awarded, irrespective of whether the course was undertaken at Nottingham China or Malaysia. Our degrees are accredited by international professional bodies such as the Association of MBAs, Royal Pharmaceutical Society of Great Britain, and the UK Engineering Council which means that our programmes are tested for quality.



## China

- The University of Nottingham Ningbo Campus

## UK

- University Park Campus
- Jubilee Campus
- Sutton Bonington Campus
- Medical School



The University of Nottingham Malaysia Campus welcomed its first students in September 2000. This development is a fundamental part of Nottingham's vision to become a truly global university for the 21st century and beyond. Furthermore, it is the first ever branch campus of a UK University abroad, earning the University the distinction of the Queen's Award for Enterprise in the field of international achievement, the first award of its kind to an academic institution.

The Malaysia Campus is a full and integral part of The University of Nottingham, UK and offers students the Nottingham experience in an ASIAN setting. The campus also has received Malaysia's prestigious Multimedia Super Corridor (MSC) status. It is a global institution serving an international community of students and yet is firmly rooted in all that is distinctive about UK education – innovative teaching and assessment methods, which encourage independent, creative thinking. Quality standards are also among the best in the world.

The Semenyih Campus sits on a 125-acre site, 30km from Kuala Lumpur, the capital city of Malaysia. Occupying a scenic position overlooking green hills, the campus is a self-contained and self-sufficient neighbourhood village in a garden environment. It is designed to mirror the attributes of University Park in the UK, combining a high quality living environment with state-of-the-art learning and teaching facilities.

Transport is available from the campus to the nearest bus and railway station providing easy access to Kuala Lumpur and the surrounding region.

#### Teaching excellence

Nottingham award-winning research and strong teaching reputation is followed through in Malaysia. The majority of the senior academic staff is appointed from The University of Nottingham, UK. Research features highly as one of the pre-requisites for academic staff, ensuring that students are exposed to both aspects of the theoretical and practical.

At Nottingham, we have an outstanding reputation for teaching quality. Our commitment to maintaining excellence in the provision of learning and teaching ensures that the University is consistently among the highest ranking performers in independent teaching assessments.

## Nottingham and Malaysia





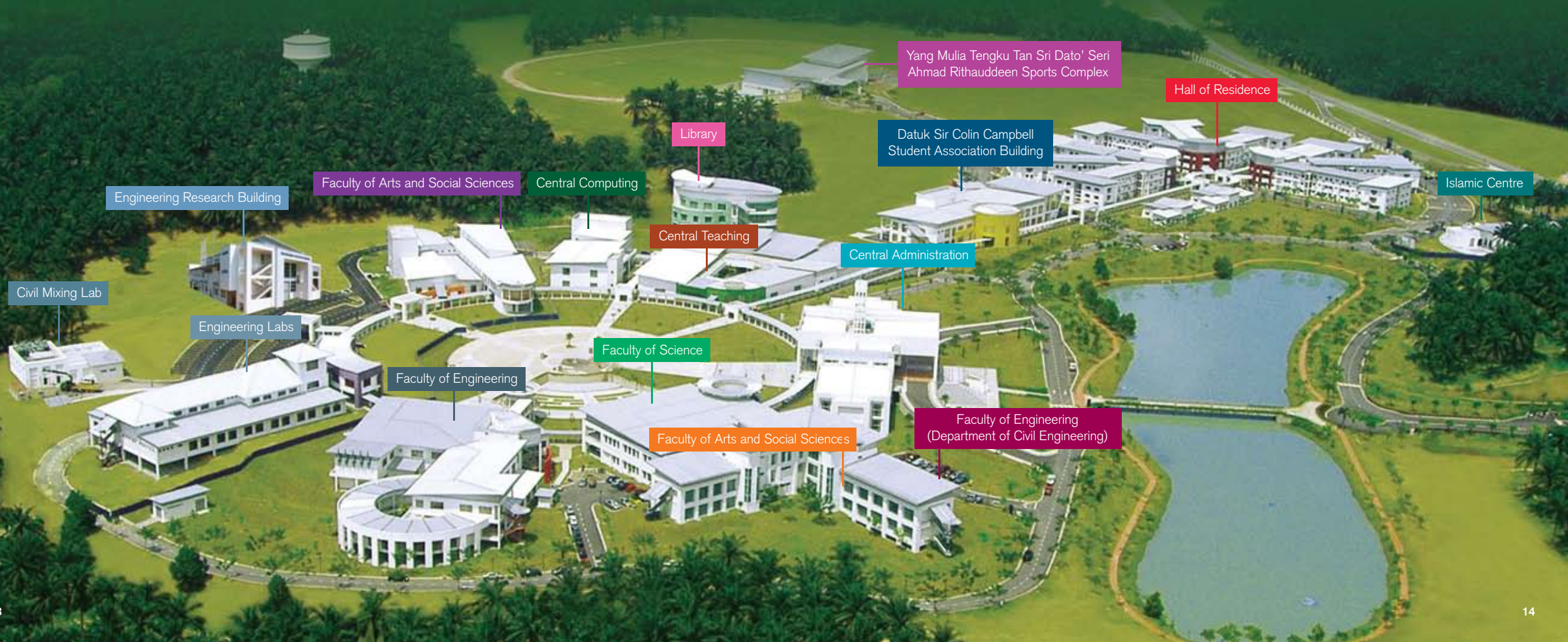
# On campus

Combining beautiful gardens, striking architecture and state-of-the-art learning and research facilities, our University is an inspirational place to live, work and study.

"Nottingham is the nearest Britain has to a truly global university, with campuses in China and Malaysia modelled on a headquarters that is among the most attractive in Britain."

The Times Good University Guide 2011

The facilities on campus include a Community Hall, Islamic Centre, music room/ theatre, jogging tracks and basketball courts, swimming pool, sports complex, computer laboratories, language laboratories, Science & Engineering laboratories and 24-hour high speed wired and wireless networks.







# “Selamat Datang”

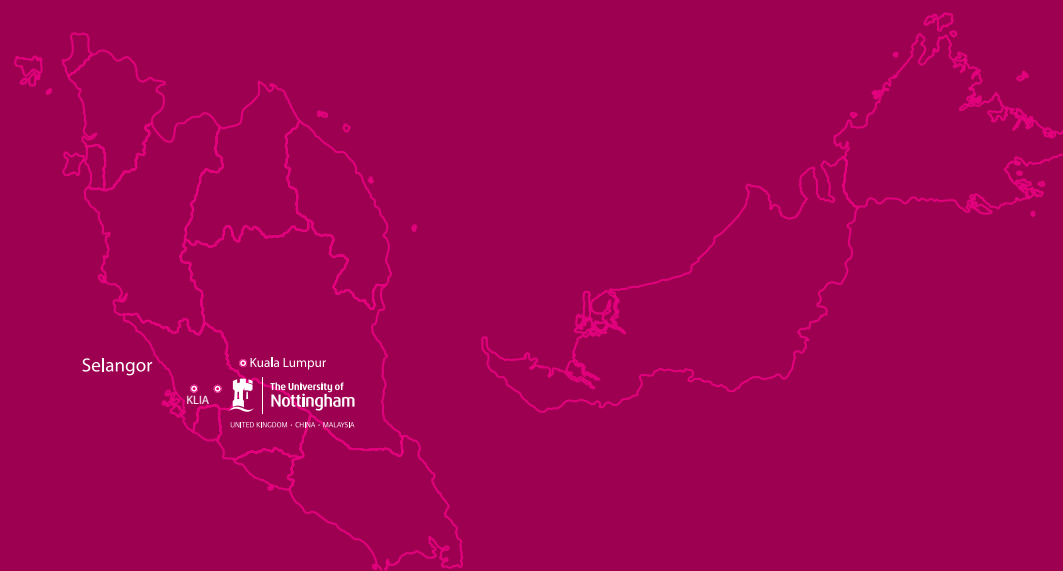
“Selamat Datang” means the warmest welcome in Bahasa Malaysia, and it is also the National Language in Malaysia. Covering an area of 127,350 square miles (329,847 square kilometers), Malaysia consists of two regions separated by the South China Sea: Peninsular Malaysia and the Malaysian Borneo (also known as the West and East Malaysia respectively). The Peninsular Malaysia extending south-southeast from the border of Thailand. The Malaysian Borneo consists of the States of Sabah and Sarawak which is located on the northwestern coastal region of the island of Borneo. The capital of Malaysia is Kuala Lumpur while Putrajaya houses The Federal Government. The country's population is over 28.7 million to date.

## The capital city

Kuala Lumpur is one of Asia's most vibrant and exciting cities. Geographically, it lies in the heart of South East Asia and provides a popular gateway to many regional destinations including Hong Kong, Bangkok, Singapore, Indonesia and Australia. KL is a true metropolis with some of the world's tallest buildings and a thoroughly modern infrastructure.

However, it has managed to retain much of its original character and local color. The city is served by a comprehensive and modern transportation system. Railway lines and roads radiate from the city providing swift access to other parts throughout the country.

Within the city, stage and express buses as well as taxis are available on regular basis. A commuter train service - Keretapi Tanah Melayu (KTM) has been introduced to connect the city to neighbouring towns. The city's public transportation has been further augmented by the Light Rail Transit (LRT) and Monorail. The Semenyih campus is about 45-minute drive from the vibrant city.





We at the International Office welcome you to join our happy family! We will be delighted to see you dropping by our office at the new Enquiry Centre to say 'Hi!' to us once you have arrived on campus.

# International Office

The International Office looks after all aspects of the University's interactions with institutions and students from outside of Malaysia. International prospective and current international students at UNMC can rely on support from our International Office on a range of matters both before and after applying to the University and during their time here. This includes student welfare and advice, student visa, medical insurance and the management of overseas student exchange programmes.

## International student support

The International student support office is responsible to assist all international students. We also provide essential documentation such as letters on living expenses and invitations for visas and opening bank accounts.

We welcome visits from international students and can advise you on the professional support services offered by The University of Nottingham in Malaysia.

Feel free to seek advice if you have any problems relating to living and studying in a foreign country.

## Airport pickup

Arriving to a new country for the first time can be overwhelming. To make it as easy as possible for you, we offer free airport pickup service for new international students arriving at Kuala Lumpur International Airport (KLIA).

Our University Student Visa and Airport pickup representative will meet students at the Immigration checkpoint of KLIA. The International Office will be happy to tell you more about this service.

## Student visa support

All Non-Malaysian nationals who wish to study at an educational institution in Malaysia are required to hold a valid Student Pass. We assist international students in arranging dependent passes for spouse or family members upon request; renew the student visa while transferring schools within Malaysia and any other visa related issues. The Visa Office also arranges for the required annual renewal of student visas.

## Medical insurance

Medical Insurance Coverage is compulsory and arranged for international students by the International Office. The medical insurance coverage takes effect from the date you register as a student. The University of Nottingham Malaysia Campus has arranged for a Hospital and Surgical Insurance Programme to deal effectively with any hospital and surgical cases that may arise during your period of study at the Malaysia Campus.

## Opening a bank account

Most banks are likely to offer international students basic accounts with ATM Card / VISA Debit Card. In order to open a bank account, you need a letter issued by the International Office confirming your student status at the University, original passport and a minimum deposit (Must be in Ringgit Malaysia (RM) around RM250 – RM300). If you are under 18 years old, you will need an indemnity form signed by your parents and witnessed by the relevant authority from your home country to get your bank account opened.

## International student recruitment

Members of the International Office frequently travel to different countries to meet with prospective students and their families. These trips allow students to find out more about Nottingham and studying in Malaysia. If you would like to visit the University, we are happy to arrange a tailor-made visit for you.

See more: [www.nottingham.edu.my/International](http://www.nottingham.edu.my/International)



# Overseas Opportunities

Studying abroad gives the opportunity to live and study in a new environment and learn about cultures and countries.

Nottingham has an extensive network of exciting exchange links. We offer life-enhancing opportunities to study abroad at our campuses in the UK and China as well the chance to study for a period of time at partner universities across the globe. We offer life-enhancing opportunities to study abroad at our campuses in the UK and China as well the chance to study for a period of time at partner universities across the globe.

## Inter-campus exchange programme

One unique feature of the Malaysia Campus is the opportunity for an undergraduate to spend one or two semesters of the second year of study in The University of Nottingham, UK Campus or the Ningbo, China Campus paying only Malaysia Campus tuition fees. Participation is subject to the programme or courses taught at our overseas campuses. (Please check with relevant faculties about the programme available).

## Inter-campus transfer programme

Students registered at the Malaysia Campus are also eligible to transfer to The University of Nottingham, UK and also to Ningbo, China, after one year at the Malaysia Campus, provided there is space at the appropriate School in Nottingham at the respective campuses. Transfer under this scheme is not available to students on the Student Exchange Programme and is restricted by a fixed quota system set in the UK. The normal fee chargeable for international students at Nottingham UK and Nottingham Ningbo, China is according to the country's currency exchange.

## Study abroad programmes

In addition to exchange programmes where no additional tuition fee is required, the University may also offer opportunities to study at Nottingham UK or at one of the approved study abroad partners elsewhere in the world for an additional fee. For details, please check with the International Office.

## Summer Institute at Nottingham, UK

We organise a Summer Institute at our UK campus for a number of undergraduate students at the end of their third year. Postgraduate can also go to our UK campus for two to three weeks of study in the summer. This is of particular value to them in their dissertation preparation.

## International Summer Schools

Two-week courses, based at our campuses in China and Malaysia, will provide you with the opportunity to study a new area while meeting people from all over the world and learning about a different culture. You will study with world-class academics, take part in exciting cultural and social activities and make friends who will stay with you for life.

The Summer Schools are open to anyone in the world who fulfils the academic entry requirements.

See more: [www.nottingham.edu.my/International/studyabroad](http://www.nottingham.edu.my/International/studyabroad)



# Resources for success

At Nottingham, we understand it can take time to adjust to living and studying in a new environment. We provide a number of dedicated services designed to help you with the transition to University life and beyond.

You will find our campus vibrant and welcoming with lots of events and activities to interest you. The Students' Association provides many opportunities to enhance your university life, and our facilities enable you to socialise, participate in many activities and take a break from academic life.





At Nottingham, we welcome visits from international students who seek advice on the support services offered by the University. Feel free to talk to us if you have any problems relating to living and studying while in Malaysia.

### Your support services

For many of you, this will be your first time away from home and also your first time living in a foreign country. Consequently, you may be finding it difficult to settle in to the University. The first thing that you have to do is to realize that these emotions are quite normal and that you should not feel that you are different from others by feeling homesick or lonely. If you are finding it difficult to settle in, apart from the support provided from International Office, there are a number of support services that can help.

#### Academic tutor system

Students are assigned a personal academic tutor who is usually a member of academic staff involved in teaching the subject taken. Students meet with the tutor at the start of each semester and may turn to them for advice and help on all personal and academic matters.

#### Disability support

The campus at Semenyih has been designed with students with disabilities in mind. The disability service is able to advise students who have physical disabilities, dyslexia and other long term medical conditions. The disability service is currently being offered through the Counseling Service.

#### Counseling service

The University Counseling Service is a free confidential service available to all students throughout the year (including vacation time). It provides you an opportunity to talk in confidence about any personal problems. The counseling team comprises professionally qualified counselors and psychologists. They are located on the 1st Floor of the Student Association Building.

See more: [www.nottingham.edu.my/Wellbeing/Disability/WelcometoUNMCDisabilityServices.aspx](http://www.nottingham.edu.my/Wellbeing/Disability/WelcometoUNMCDisabilityServices.aspx)

#### The Graduate School

The Graduate School offers support and guidance to all postgraduate students. Through a combination of research based training courses and social events, we endeavor to develop and enhance both the student's academic ability and experience at the Malaysia Campus. We are on hand to complement the training students will receive from within their own department and provide additional opportunities to further their career and skill base.

See more: [www.nottingham.edu.my/Gradschool](http://www.nottingham.edu.my/Gradschool)

#### Making IT works for you

IS provides a range of IT Services to facilitate staff and students of the University in their pursuit of academic and research excellence.

See more: [www.nottingham.edu.my/IS/ITServices](http://www.nottingham.edu.my/IS/ITServices)

#### English language support

We believe that all students have the potential to complete their studies speaking excellent English. Having a good grasp of the English language will not only compliment and enhance your learning experience, it will also provide you with the skills needed to prosper in an increasingly globalised workplace.

#### Library resources

The library at the Malaysia Campus is one of eleven branch libraries of The University of Nottingham's network of libraries. The more collection covers materials to meet the taught courses offered by the University with generous allocations in developing resources required for research purposes. The library is also proactive in developing a wide spectrum of electronic resources and in promoting and guiding the use of information resources, including the provision of subject based reference enquiry services, Internet subject gateway services and subject focussed academic support services.

Electronic resources are accessible not only via the networked computers within the campus but also remotely with appropriate security authentication.

See more: [www.nottingham.edu.my/IS/LibraryServices](http://www.nottingham.edu.my/IS/LibraryServices)

#### Career Office

The Careers Advisory Service (CAS) plays an important role in the development of our students. The service not only assists students in employment but also helps students to develop the skills needed to plan and manage their future.

#### Faith provision

Prayer rooms are available 24 hours a day for Muslim students. There will be a free bus service provided for Muslim students for Friday Prayers. Hindu, Buddhist temples and Christian worship are available in Semenyih.

#### Health and wellbeing

In addition to the many opportunities available to students to enhance their life on campus we also hold the health and wellbeing of our students in high regard. The campus houses the University Health Centre where students and staff can seek medical advice and consultation. Highly trained staff at the centre can also dispense medicines and arrange for laboratory tests and referrals where necessary.

The Health Centre opening hours are as below:

Mon – Fri : 8.30am to 4.30pm  
Sat : 8.30am to 12.30pm  
Sun : Close

#### University cafeteria

The University cafeteria located in the Student Association building provides a variety of cuisine and all the meals provided are Halal. Choices include Western Chinese, Indian, Vegetarian and Asian Fusion; and take-away sandwiches, burgers and snacks. Normally, the cafeteria is open from 8:00 am to 10:00 pm daily, although there may be less variety on weekends, public holidays and term breaks.

#### Sports facilities

We have a range of sports facilities on campus that are open to all students, from serious athletes to casual competitors. Our outdoor facilities include a swimming pool, courts for tennis, netball, basketball and futsal, jogging tracks and a multi-purpose pitch for sports such as football, frisbee, hockey and rugby.

See more: [www.nottingham.edu.my/sport](http://www.nottingham.edu.my/sport)

#### Student clubs and societies

In addition to our sports clubs, there are over 40 clubs and societies to get involved with, providing students at The University of Nottingham Malaysia Campus plenty of opportunity to participate in year-round events.

#### Student Association

Our Student Association (SA) plays an important role in building a student's character and leadership qualities. Each year we hold an election to select Student Association committee members and office bearers. Becoming involved with the SA is a great opportunity to get more involved in student life at UNMC. It will give you the opportunity to directly contribute to the student voice and is a great way to enhance your CV.

The SA facilitates the many societies and associations which cater for the diverse background of students at UNMC. The activities undertaken by these societies and associations are fully supported by the University.

#### Alumni

Graduates of The University of Nottingham remain part of our global community which currently numbers 200,000 worldwide. The Malaysian association, with some 5,000 members, plays a particularly important role for students at the Malaysia Campus. The University's Alumni office ensures that this invaluable resource remains relevant to you throughout your career and later life, wherever you may live, and acts as the focal point for your ongoing relations with the University.

See more: [www.nottingham.ac.uk/alumni](http://www.nottingham.ac.uk/alumni)





# Foundation courses

What is a Foundation Programme?	27
Intakes	27
Foundation Programme entry requirements and tuition fees	28
Preparatory English Programme	32



# Foundation courses

## What is a Foundation Programme? **Duration**

The University of Nottingham Foundation Programmes are pre-university level courses that provide students with the skills to successfully undertake rigorous undergraduate degree programmes at one of the world's best universities.

The foundation programme runs full-time for either three semesters or two semesters. The three-semester programme is ideal if you have completed a minimum of 11 years of formal education. The two-semester programme is suitable if you have completed at least 12 years of formal education but need to enhance your skills in order to undertake an undergraduate degree.

The Foundation Programme has three aims:

- To increase academic knowledge and study skills
- To improve English Language competence
- To help students adapt to university life

All Foundation students have the same access to university facilities as undergraduate and postgraduate students and play a full part in the University community. Successful completion of your chosen Foundation Programme can lead to direct-entry onto your chosen undergraduate degree.

Whilst all Foundation programmes have an English language component, each Foundation course is designed to target the specific needs of the student. For example, the Foundation in Science covers topics such as mathematics, biology, psychology and computing; whilst the Foundation in Arts focuses largely on language and communication skills. We also seek to guide students through non-academic tutorials which expose students to topical issues for discussion and assist students on a one-to-one basis on personal or academic issues.

Each semester consists of 15 weeks, with 10-12 weeks of teaching and two weeks of examinations. If you study for the three-semester programme, you would take all appropriate modules. If you opt for the two-semester programme you would take the appropriate modules for the first and second semesters.

## Intakes

In order to accommodate the high demand for our Foundation programmes we have three annual intakes.

- For students wishing to participate in the three-semester programme, we have intakes in April and July.
- For students opting for the two-semester programme, annual intake is in September.

Our Foundation programmes available at the University:

- Foundation in Arts
- Foundation in Business & Management
- Foundation in Engineering
- Foundation in Science

Find out more:  
e: [international.enquiries@nottingham.edu.my](mailto:international.enquiries@nottingham.edu.my)  
w: [www.nottingham.edu.my/Foundation](http://www.nottingham.edu.my/Foundation)

## Foundation in Arts (2 or 3 semesters)

Fee: RM8,270 per semester

Country	Acceptable qualifications	Entry Requirements
	Cambridge/Edexcel O-level qualification (GCSE or IGCSE)	4 subjects grade B and 2 subjects grade C including Mathematics, excluding Religion and National language (3 semesters)
Bangladesh	Intermediate/Higher Education Secondary School Examination	75% average with at least 60% in Mathematics
China	Senior High School Diploma	80-85% average with at least 60% in Mathematics  If grades are marked out of 150 then we should look for a score of around 120
India	CBSE / ISC	70% with at least 50% in Mathematics  English language exemption if 60% in Yr 12 or 65% in Yr 10 English achieved
Indonesia	Surat Tanda Tamat Belajar Sekolah Menengah Umum Tingkat Atas (STTB & SMA)	Average of 7 in 6 academic subjects with at least 6 in Mathematics
Iran	Year 11 final high school transcript from June 2012	15/20 average with 15 in relevant subjects (3 semesters)
Kazakhstan	Attestat o srednem obrazovani (Certificate of Secondary Education, Year 11)	Grade 5 (excellent) in at least 3 subjects and Grade 4 (good) in at least 3 other subjects from the following list: Biology, Chemistry, Physics, Geography, World History and Computer Science, Human and Society, Psychology, Jurisprudence, Management, Algebra, Geometry, and Mathematics (3 semesters)
Middle Eastern countries	General Secondary School Certificate	80% average in 6 academic subjects with at least 60% in Mathematics, excluding Religion and Arabic
Bahrain, Egypt, Iraq, Jordan, Kuwait, Oman, Qatar, Saudi Arabia, UAE, Yemen	Tawjahiya / Thanaweya A'ama/Al Azhar / Tawjiji / Shahadat-al-thanawia-al-a'ama / Al-Thanawaya Al-Amah / Tawjihiyah	As a general rule, students who have undergone 12 years of education are eligible to be considered for the 2 semester foundation. However, under certain specific circumstances, students will be asked to join 3-semester foundation
Nigeria	Senior School Certificate (WAEC) NECO results will have to be considered on a case by case basis	5 subjects grade B with Mathematics at grade C, excluding Religion and National language (3 semesters)
Pakistan	Intermediate/Higher Secondary School Certificate	75% average with at least 60% in Mathematics, excluding Religion and National language
Sudan	Sudan School Certificate	A minimum of 5 subjects at 75% with Mathematics at 60%, excluding Religion and National language (3 semesters)
Vietnam	High School Diploma (Tot nghiep pho thong trung hoc)	Average grade of 7 with at least 5 in Mathematics



## Foundation in Business & Management (2 or 3 semesters)

Fee: RM8,270 per semester

Country	Acceptable qualifications	Entry Requirements
	Cambridge/Edexcel O-level qualification (GCSE or IGCSE)	4 subjects grade B including Mathematics and 2 subjects grade C, excluding Religion and National language (3 semesters)
Bangladesh	Intermediate/Higher Education Secondary School Examination	75% average with at least 75% in Mathematics
China	Senior High School Diploma	80-85% average with at least 80% in Mathematics. If grades are marked out of 150 then we should look for a score of around 120
India	CBSE / ISC	70% with at least 60% in Mathematics  English language exemption if 60% in Yr 12 or 65% in Yr 10 English achieved
Indonesia	Surat Tanda Tamat Belajar Sekolah Menengah Umum Tingkat Atas (STTB & SMA)	Average of 7 in 6 academic subjects and 8 in Mathematics
Iran	Year 11 final high school transcript from June 2012	15/20 average with 15 in relevant subjects (3 semesters)
Kazakhstan	Attestat o srednem obrazovami (Certificate of Secondary Education, Year 11)	Grade 5 (excellent) in at least 3 subjects and Grade 4 (good) in at least 3 other subjects from the following list: Biology, Chemistry, Physics, Geography, World History and Computer Science, Human and Society, Psychology, Jurisprudence, Management, Algebra, Geometry, and Mathematics  Pass NUBS Foundation Entrance exam (3 semesters)
Middle Eastern countries	General Secondary School Certificate	80% average in 6 academic subjects with at least 80% in Mathematics, excluding Religion and Arabic. A strong Physics grade of 80% and above can be considered in lieu of Maths for the Business Foundation
Bahrain, Egypt, Iraq, Jordan, Kuwait, Oman, Qatar, Saudi Arabia, UAE, Yemen	Tawjahiya / Thanaweya A'ama/Al Azhar / Tawjihi / Shahadat-al-thanawia-al-a'ama / Al-Thanawaya Al-Amah / Tawjihiyah	As a general rule, students who have undergone 12 years of education are eligible to be considered for the 2 semester foundation. However, under certain specific circumstances, students will be asked to join 3-semester foundation
Nigeria	Senior School Certificate (WAEC) NECO results will have to be considered on a case by case basis	A minimum of 5 subjects at grade 4 with Mathematics at grade 3, excluding Religion and National language (3 semesters)
Pakistan	Intermediate/Higher Secondary School Certificate	75% average with at least 75% in Mathematics, excluding Religion and National language
Sudan	Sudan School Certificate	A minimum of 5 subjects at 75% with Mathematics at 85%, excluding Religion and National language (3 semesters)
Vietnam	High School Diploma (Tot nghiep pho thong trung hoc)	Average grade of 8 with at least 8 in Mathematics

## Foundation in Engineering (2 or 3 semesters)

Fee: RM9,370 per semester

Country	Acceptable qualifications	Entry Requirements
	Cambridge/Edexcel O-level qualification (GCSE or IGCSE)	Grade A in Mathematics, 4 subjects grade B including Physics and Chemistry (3 semesters)
Bangladesh	Intermediate/Higher Education Secondary School Examination	75% average with at least 75% in Mathematics, Physics and Chemistry
China	Senior High School Diploma	75% average with at least 75% in Mathematics, Physics and Chemistry. If grades are marked out of 150 then we should look for a score of around 115
India	CBSE / ISC	70% average with at least 65% in Mathematics, Physics and Chemistry
Indonesia	Surat Tanda Tamat Belajar Sekolah Menengah Umum Tingkat Atas (STTB & SMA)	Average of 7 in 6 academic subjects with at least of 7 in Mathematics, Physics and Chemistry
Iran	Year 11 final high school transcript from June 2012	15/20 average with 15 in relevant subjects (3 semesters)
Kazakhstan	Attestat o srednem obrazovami (Certificate of Secondary Education, Year 11)	Average of 4. Grade 5 in Mathematics, Physics and Chemistry (3 semesters)
Middle Eastern countries	General Secondary School Certificate	80% average in 6 academic subjects. Minimum of 80% in Mathematics, Physics and Chemistry
Bahrain, Egypt, Iraq, Jordan, Kuwait, Oman, Qatar, Saudi Arabia, UAE, Yemen	Tawjahiya / Thanaweya A'ama/Al Azhar / Tawjihi / Shahadat-al-thanawia-al-a'ama / Al-Thanawaya Al-Amah / Tawjihiyah	As a general rule, students who have undergone 12 years of education are eligible to be considered for the 2 semester foundation. However, under certain specific circumstances, students will be asked to join 3 semester foundation
Nigeria	Senior School Certificate (WAEC) NECO results will have to be considered on a case by case basis	Grade A in Mathematics, 4 subjects grade B including Physics and Chemistry (3 semesters)
Pakistan	Intermediate/Higher Secondary School Certificate	75% average with at least 75% in Mathematics, Physics and Chemistry, excluding Religion and National language
Sudan	Sudan School Certificate	75% average of 5 subjects with at least 75% in Mathematics, Physics and Chemistry (3 semesters)
Vietnam	High School Diploma (Tot nghiep pho thong trung hoc)	Average grade of 8 with at least 8 in Mathematics, Physics and Chemistry



## Foundation in Science (2 or 3 semesters)

Fee: RM9,370 per semester

Country	Acceptable qualifications	Entry Requirements
	Cambridge/Edexcel O-level qualification (GCSE or IGCSE)	A minimum of 5 subjects grade B including Mathematics and a science subject, excluding Religion and National language (3 semesters)
Bangladesh	Intermediate/Higher Education Secondary School Examination	75% average in 5 subjects with at least 75% in Mathematics and a science subject
China	Senior High School Diploma	75% average in 5 subjects with at least 75% in Mathematics and a science subject  If grades are marked out of 150 then we should look for a score of around 115
India	CBSE / ISC	70% average with at least 65% in Mathematics and a science subject
Indonesia	Surat Tanda Tamat Belajar Sekolah Menengah Umum Tingkat Atas (STTB & SMA)	Average of 7 in 5 academic subjects with at least 7 in Mathematics and a science subject
Iran	Year 11 final high school transcript from June 2012	15/20 average with 15 in relevant subjects (3 semesters)
Kazakhstan	Attestat o srednem obrazovani (Certificate of Secondary Education, Year 11)	Grade 5 (excellent) in 2 subjects including Mathematics or Algebra and a science subject and Grade 4 (good) in at least 3 other subjects from the following list: Biology, Chemistry, Physics, Geography, World History and Computer Science, Human and Society, Psychology, Jurisprudence, Management, Algebra, Geometry, and Mathematics(3 semesters)
Middle Eastern countries Bahrain, Egypt, Iraq, Jordan, Kuwait, Oman, Qatar, Saudi Arabia, UAE, Yemen	General Secondary School Certificate  Tawjahiya / Thanaweya A'ama/Al Azhar / Tawjihi / Shahadat-al-thanawia-al-a'ama / Al-Thanawaya Al-Amah / Tawjihiyah	80% average in 5 academic subjects with at least 80% in Mathematics and a science subject  As a general rule, students who have undergone 12 years of education are eligible to be considered for the 2 semester foundation. However, under certain specific circumstances, students will be asked to join 3 semester foundation
Nigeria	Senior School Certificate (WAEC) NECO results will have to be considered on a case by case basis	5 subjects grade B including Mathematics and a science subject (3 semesters)
Pakistan	Intermediate/Higher Secondary School Certificate	75% average with at least 75% in Mathematics and a science subject, excluding Religion and National language
Sudan	Sudan School Certificate	A minimum of 5 subjects at 75% with Mathematics at 85%, excluding Religion and National language (3 semesters)
Vietnam	High School Diploma (Tot nghiep pho thong trung hoc)	Average grade of 7-8 with at least 8 in Mathematics and a science subject

## English language minimum requirements

Type of tests	Foundation
IELTS	6.0 (with no element below 5.5)
TOEFL (iBT)	79 (with no element below 19)
GCSE/ IGCSE English	Grade C
PTE (Academic)	55 (minimum 51)

- All IELTS to be the academic version of the test.
- IELTS and TOEFL test results must not be more than 2 years old.

## English language support

### What is a Preparatory English Programme?

Pre-sessional English Programme is designed for applicants who have met the academic entry requirement but not the language requirement, and who have a conditional offer from the University. Run in a block of ten or twenty weeks, they give a boost to the students' academic English, and help them become more proficient and confident in the use of the language.

### Course structure

During your course you will be required to write short essays and longer academic assignments, read academic articles and books, show an understanding of lectures and note taking, participate in seminars and oral presentations, expand your range of grammatical structures and vocabulary. You will also develop an understanding of the study skills required for study at university level.

### Entry requirements

A conditional offer from the University for a Foundation/ Undergraduate/Postgraduate programme where the student has not met the English language requirements. The qualifications will be considered on a case-by-case basis.

### Fees:

RM 5,515 per 10 weeks

### Mode of study:

10 weeks – for students who need to improve their IELTS score by 0.5

20 weeks – for students who need to improve their IELTS score by 1.0

30 weeks – for students who need to improve their IELTS score by 1.5

### Intakes:

February – 30 weeks

April – 20 weeks

July – 10 weeks

### In-sessional support

Our in-sessional classes run throughout your degree course. These classes may be aimed at general improvement of English, or they may be subject specific, helping you improve your proficiency in your area of study.

If you take our 3-semester foundation programme you must take at least one module of academic English. This will teach you how to express yourself in the style and format expected by a world-class international university.

Further information:

e: [international.enquiries@nottingham.edu.my](mailto:international.enquiries@nottingham.edu.my)  
w: [www.nottingham.edu.my/Cele/Programmes](http://www.nottingham.edu.my/Cele/Programmes)





# Arts & Social Sciences

Welcome to the Faculty of Arts & Social Sciences 35

Entry requirements and tuition fees 37

Nottingham University Business School

Nottingham School of Economics

School of Education

Institute of Work, Health and Organisations

School of Law

School of Modern Languages & Cultures

School of Politics, History and International Relations

Centre for English Language Education



# Faculty of Arts & Social Sciences

## Welcome to the Faculty of Arts & Social Sciences

The Faculty of Arts and Social Sciences was formed in September, 2010, by bringing together the existing faculties of Social Sciences and of Arts and Education. The new Faculty currently comprises eight schools, covering a range of disciplines from Foundation to Doctoral level. It is the most diverse faculty to which the degree programmes always lead to Nottingham degrees that are identical to those that are awarded in the UK (or China campus).

The staffs are drawn from across the globe where most are engaged in cutting-edge research. They are skilled educators who are dedicated, passionate about their subjects to develop their students into articulate, critically-minded global citizens. Below are some brief descriptions of each individual school within the faculty.

**Nottingham University Business School (NUBS) Malaysia** is an integral part of NUBS United Kingdom, and is consistently ranked amongst the top 20 Business Schools in the UK. The School attracts the very best students from all over the world, and aims to provide a stimulating environment for learning, leveraging on its presence in Malaysia to provide Asian insights that drive business operations and growth in the region and around the world.

The Business School is one of the few UK business schools ranked in the 2009 *Financial Times* Global Top 100 MBA, with the PhD Programme ranked 36th in the world. In 2008, the *Financial Times* ranked the MSc in International Business in their Top 50 Masters in Management programmes, with this degree rated '5th best in international business' overall. The Business School is accredited by EQUIS (the European Quality Improvement System) and AMBA (the Association of MBAs) marking it as a leading institution in business education.

The Nottingham **School of Economics** celebrates its one hundredth anniversary this year. It is highly regarded and established as one of the best Economics Schools in the world. The School was awarded top marks by the Quality Assurance Agency – 24 out of 24 – for its teaching quality in the latest assessment round. The School is consistently ranked in the top 10 in UK rankings of economics departments.

The **School of Education** is an exciting and rewarding place to study. We are pleased to welcome students from across the world into our vibrant community. As one of the largest and most established education departments of any UK university, we lead the way in research and teaching quality.

The **Institute of Work, Health and Organizations (I-WHO)** is an international centre of excellence for study and research in applied psychology. I-WHO at the University of Nottingham Malaysia Campus (UNMC) was launched in December 2006. The Institute strives towards being a Southeast Asian leader for research and teaching in applied psychology and related areas can make to organizational health, occupational and public health and safety, and the management of related health services. The Institute recognises the potential for growth and development in applied psychology in Asia. At UNMC, the Institute is a full-fledged academic department in the Faculty of Arts & Social Sciences.

The **School of Law** is consistently ranked amongst the top Law Schools in the United Kingdom and it is among the leading centres for legal research and teaching in the world. Staffs in the School have high international reputations and all are active scholars and teachers. The popularity of the University of Nottingham's LLM degrees has been growing steadily since their introduction in 1987, and now forms an essential part of the portfolio of courses offered by the School of Law.

The **School of Modern Languages and Cultures (SMLC)** is a dynamic community of researchers and teachers of international standing. SMLC offer a wide range of exciting undergraduate, postgraduate and research opportunities taught by experienced and highly-qualified staff with academic and business/professional experience. A unique aspect of SMLC degree programmes is the compulsory language component. The study of a modern European or Asian language is a core requirement, ensuring that you graduate with a high level of spoken and written fluency (in a language new to you), improving not only your grasp of another language and culture, but also dramatically enhancing your employability in today's competitive job market.

The **School of Politics, History and International Relations (PHIR)** is truly international enjoying close links with Nottingham's UK and China campuses. Students are exposed to a wide variety of subjects in International Relations including international political economy, international politics, conflict analysis, security studies, global resistance and diplomacy. The distinctive aspect of PHIR is the students are able to take up variants of the degree, with a combination of International Relations with foreign languages.

The **Centre of English Language Education (CELE)** performs a variety of activities, all of which are underpinned by our commitment to high quality, interactive, and informed teaching methodology. In addition to the programmes listed below, for students already at the University, we provide Insessional English classes and language support. Some of these Pre-sessional and Insessional Programmes can lead to further English Language qualifications. Through all of its activities, CELE aims to provide English Language support for Nottingham students at all stages of their academic careers.





## Entry requirements and tuition fees

Programme	Tuition fees	Country	Acceptable qualifications	Entry Requirements	
<b>BA (Honours)</b>  International Communications Studies  International Communications Studies with Film & Television Studies  International Communications Studies with English Language & Literature	RM37,950 per year		A-Levels	BBC, excluding General Studies, with Grade C in GCSE/IGCSE Mathematics	
			IB Diploma	28 points with 5,5,4 at HL and 4 points in Mathematics and SL/HL	
		Australia	SAM/AUSMAT/HSC	ATAR (UAI)/TER/ENTER 82	
		Canada	Canadian Pre-U	80% average based on 6 subjects	
		India	Indian Certificate of Secondary Education (Class XII)*	• CBSE/ISC Boards	79% average
				• West Bengal Board	69% average
				• All other State Boards	84% average
			Class X Mathematics	60%	
		Iran	Pre-University Certificate <i>Before June 2012</i> / Year 12 Final High School Certificate <i>from June 2012</i> / Year 11 Mathematics		14/20
					14/20
International Relations	RM37,950 per year		A-Levels	BBB, excluding General Studies, with grade C in GCSE/IGCSE Mathematics	
			IB Diploma	30 points with 5,5,5, at HL and 5 points in Mathematics at SL/HL	
		Australia	SAM/AUSMAT/HSC	ATAR (UAI)/TER/ENTER 86	
		Canada	Canadian Pre-U	85% average based on 6 subjects	
		India	Indian Certificate of Secondary Education (Class XII)*	• CBSE/ISC Boards	80% average
				• West Bengal Board	70% average
				• All other State Boards	85% average
			Class X Mathematics	60%	
		Iran	Pre-University Certificate <i>Before June 2012</i> / Year 12 Final High School Certificate <i>from June 2012</i> / Year 11 Mathematics		16/20
					14/20

\*India: required average score of the best 4 subjects, excluding local language and Environmental Education (ISC)

Programme	Tuition fees	Country	Acceptable qualifications	Entry Requirements	
International Relations with French/Spanish/German/Japanese/Mandarin/Korean	RM37,950 per year		A-Levels	ABB, excluding General Studies, with Grade C in GCSE/IGCSE Mathematics	
			IB Diploma	32 points with 6,5,5, at HL and 5 points in mathematics at SL/HL	
		Australia	SAM/AUSMAT/HSC	ATAR (UAI)/TER/ENTER 90	
		Canada	Canadian Pre-U	87% average based on 6 subjects	
		India	Indian Certificate of Secondary Education (Class XII)*	• CBSE/ISC Boards	84% average
				• West Bengal Board	74% average
				• All other State Boards	89% average
			Class X Mathematics	60%	
		Iran	Pre-University Certificate <i>Before June 2012</i> / Year 12 Final High School Certificate <i>from June 2012</i> / Year 11 Mathematics		16/20
					14/20
Business, Economics & Finance  Business Economics & Management  Finance, Accounting & Management  International Business Management  Management Studies  Management Studies with French/German/Japanese/Korean/Mandarin/Spanish	RM37,950 per year		A-Levels	BBB, excluding General Studies, with Grade B in GCSE/IGCSE Mathematics	
			IB Diploma	30 points with 5,5,5, at HL and 5 points in Mathematics at SL/HL	
		Australia	SAM/AUSMAT/HSC	ATAR (UAI)/TER/ENTER 86	
		Canada	Canadian Pre-U	85% average based on 6 subjects with at least 80% in Mathematics of Data Management	
		India	Indian Certificate of Secondary Education (Class XII)*	• CBSE/ISC Boards	80% average
				• West Bengal Board	70% average
				• All other State Boards	85% average
			Class X Mathematics	70%	
		Iran	Pre-University Certificate <i>Before June 2012</i> / Year 12 Final High School Certificate <i>from June 2012</i> / Year 11 Mathematics		16/20
					16/20

\*India: required average score of the best 4 subjects, excluding local language and Environmental Education (ISC)



Programme	Tuition fees	Country	Acceptable qualifications	Entry Requirements
<b>BSc (Honours)</b> Applied Psychology and Management Studies	RM37,950 per year		A-Levels	BBB, excluding General Studies, with Grade B in GCSE/IGCSE Mathematics
			IB Diploma	30 points with 5,5,5 at HL and 5 points in Mathematics at SL/HL
		Australia	SAM/AUSMAT/HSC	ATAR (UAI)/TER/ENTER 86
		Canada	Canadian Pre-U	85% average based on 6 subjects with at least 80% in Mathematics of Data Management
		India	Indian Certificate of Secondary Education (Class XII)* • CBSE/ISC Boards • West Bengal Board • All other State Boards	80% average 70% average 80% average
		Iran	Pre-University Certificate <i>Before June 2012</i> / Year 12 Final High School Certificate <i>from June 2012</i> Year 11 Mathematics	16/20 16/20
<b>Economics</b>	RM37,950 per year		A-Levels	ABB, excluding General Studies, with Grade A in GCSE/IGCSE Mathematics
			IB Diploma	32 points with 6,5,5 at HL and 6 points in Mathematics at SL/HL
		Australia	SAM/AUSMAT/HSC	ATAR (UAI)/TER/ENTER 90
		Canada	Canadian Pre-U	87% average based on 6 subjects with 70% in Calculus and 80% in Data Management
		India	Indian Certificate of Secondary Education (Class XII)* • CBSE/ISC Boards • West Bengal Board • All other State Boards Class X Mathematics	84% average 74% average 89% average 80%
		Iran	Pre-University Certificate <i>Before June 2012</i> / Year 12 Final High School Certificate <i>from June 2012</i> Year 11 Mathematics	16/20 18/20

\*India: required average score of the best 4 subjects, excluding local language and Environmental Education (ISC)

<b>BA</b> Education with TESOL/Special Educational Needs	RM28,000 per year		A-Levels	BBC, excluding General Studies
			IB Diploma	28 points with 5,5,4 at HL
<b>BEd</b> Education with TESOL/Special Educational Needs		Australia	SAM/AUSMAT/HSC	ATAR (UAI)/TER/ENTER 82
		Canada	Canadian Pre-U	80% average based on 6 subjects
		India	Indian Certificate of Secondary Education (Class XII)* • CBSE/ISC Boards • West Bengal Board • All other State Boards	79% 69% 84%
		Iran	Pre-University Certificate <i>Before June 2012</i> / Year 12 Final High School Certificate <i>from June 2012</i>	14/20

\*India: required average score of the best 4 subjects, excluding local language and Environmental Education (ISC)

## POSTGRADUATE

Programme	Tuition fees	Entry requirements
<b>MA</b> Cultural Studies <b>MSc</b> Cultural Studies & Entrepreneurship	RM46,300	A single or joint honours degree at upper second class or above (or its international equivalent) in a relevant discipline)
<b>MA</b> International Relations <b>MSc</b> International Development Management	RM46,300	An upper second class honours degree (or its international equivalent); CGPA of 3.0+/4.0; 65%. * Other requirement : Mature applicant without standard entry requirements but with substantial and relevant experience may be considered.
<b>MBA (AMBA Accredited)</b> MBA MBA Finance MBA Entrepreneurship	RM58,000	A relevant second class honours degree or a relevant professional qualification deemed equivalent to a first degree with honours. At least 3 or more years of full-time management or leadership work experience, normally gained since graduating from the first degree.
<b>MSc</b> Management	RM46,300	An upper second class honours degree (or its international equivalent) Applicants for this MSc must have a first degree containing modules in management, economics or business studies.
International Business		An upper second class honours degree (or its international equivalent) Applicants' first degree can be of any discipline; however, the course is not designed for candidates with a first degree in Business.
Finance & Investment		An upper second class honours degree (or its international equivalent) Applicants for this MSc must have a first degree in business/economics, containing substantial components of finance. Students with an outstanding first degree in a quantitative subject will be considered.



<b>MSc</b> Management Psychology Occupational Health & Safety Leadership	RM46,300	An upper second class honours degree (or equivalent) in a relevant discipline. Management Psychology: Students will be considered if they have first degree in a relevant discipline such as psychology, management or related discipline. Occupational Health & Safety Leadership: Students with a first degree in Psychology, Safety Science, Ergonomics, Engineering, Nursing, Medicine, Public Health and other subjects allied to medicine are also eligible to apply.
<b>MA/PgDip/PgCert</b> Educational Leadership & Management (Education) Special Needs Teaching English to Speakers of Other Languages	MA: RM46,300 PgDip: RM30,867 PgCert: RM15,434	A graduate of an approved university or institute of higher education. A holder of an approved professional qualification equivalent to a first degree.
<b>Master of Research (MRes)</b> Education	RM46,300	A higher degree or a Bachelor's degree with first or second class honours (or equivalent)
<b>Master of Law, LLM</b> International Legal Studies	RM46,300	A first or good second class honours degree (or its international equivalent) in law or related discipline (such as International Relations) Other academic background/ qualifications will be considered on a case-by-case basis.

- Applicant must have graduated from an approved university.

## MPhil / PhD

Programme	Tuition fees	Entry requirements
Applied Psychology	RM35,175 per year	An upper second class honours degree (or equivalent) in relevant discipline which contains Psychology. A Masters degree either in Psychology or with an element of psychology is highly advantageous.
Business Management		A Masters degree in relevant subject (normally with an average over 65% in the taught modules and normally 65% in the dissertation, or its equivalent) An upper second honours degree (or equivalent) in a relevant subject can also be considered. Professional, business or industrial qualifications are also valued for some research areas.
Economics (2+1)		MA or MSc in Economics, or in a sub-discipline of Economics, at merit level (at least 62% or equivalent) An upper second honours degree (or equivalent) in a relevant subject can also be considered.
Education		An upper second class honours degree (MPhil) First or upper second class honours and a higher degree (e.g. Masters) (PhD)
Modern Languages & Cultures		Entry requirements are at the discretion of the School but would normally be Masters degree or equivalent professional experience/prior learning.
Politics, History & International Relations		A Masters degree in relevant subject (normally with an average over 65% in the taught modules and normally 65% in the dissertation, or its equivalent), or substantial relevant work experience.

- Applicant must have graduated from an approved university.

## English language minimum requirements

### UNDERGRADUATE AND POSTGRADUATE

Type of tests	Undergraduate programmes	Postgraduate programmes in SMLC	Postgraduate programmes in PHIR, I-WHO, SOEducation	Postgraduate programmes in NUBS and MBA	Postgraduate programme in LLM
<b>IELTS</b>	6.5 (with no element below 6.0)	7.0 (with no element below 6.0)	6.5 (with no element below 6.0)	7.0 (with no element below 6.0)	7.0 (with no element below 6.5)
<b>TOEFL (iBT)</b>	88 (with no element below 19)	100 (with no element below 21)	88 (with no element below 19)	100 (with no element below 21)*	100 (with no element below 21)
<b>IB English</b>	IB English A1 or A2 (SL or HL): 4 IB English B HL: 4 IB English B SL: 5				
<b>GCSE /IGCSE English</b>	Grade C				
<b>CBSE / ISE</b>	75%				
<b>PTE (Academic)</b>	62 (Minimum 55)				

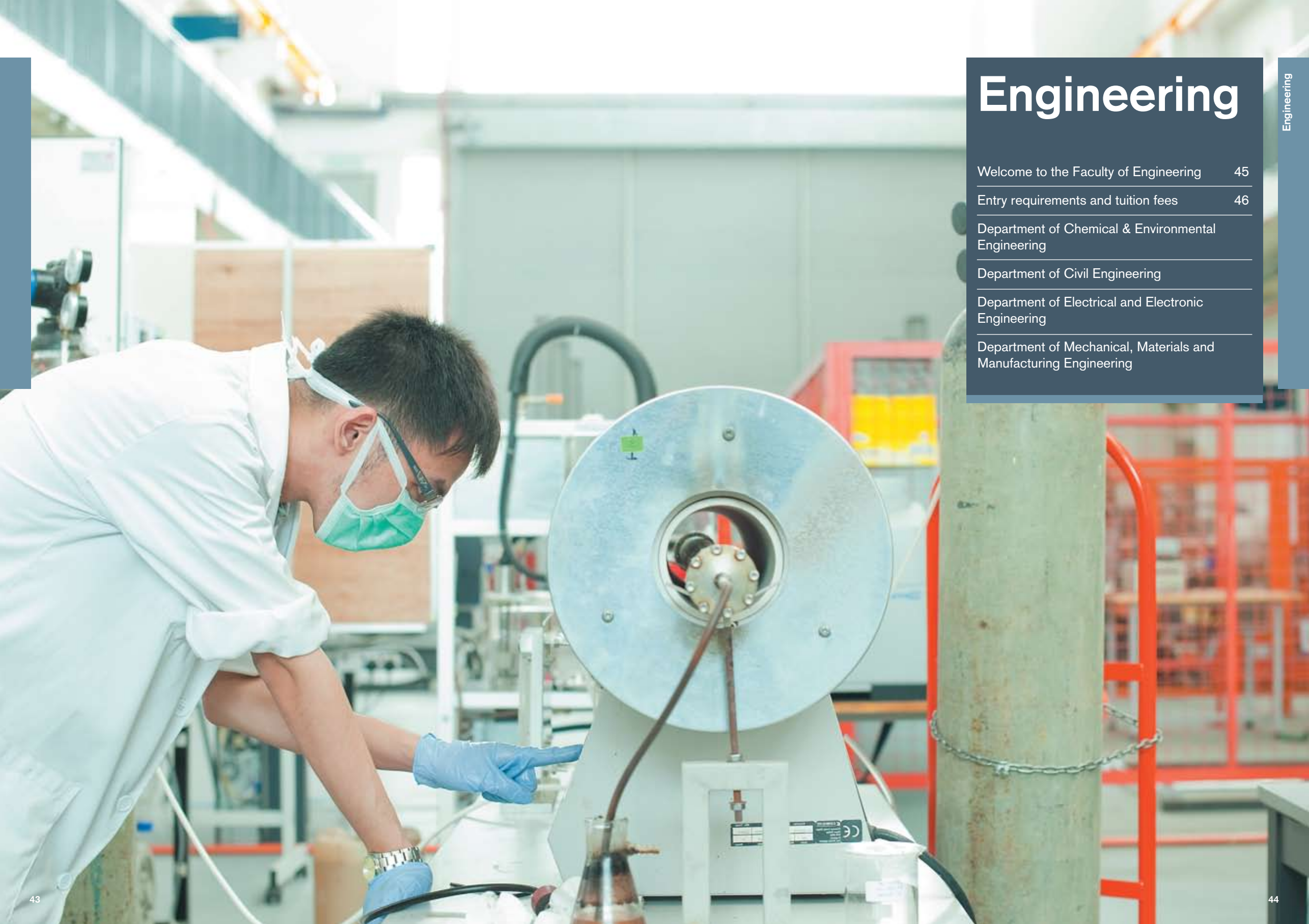
\*MBA TOEFL together with a Graduate Management Admission Test (GMAT) of at least 600 with an Analytical Writing Assessment (AWA) score of at least 5.0

## MPhil / PhD

Type of tests	PhD in Applied Psychology	PhD in Business and Management	PhD in Economics	PhD in Education	PhD in Modern Language and Cultures	
<b>IELTS</b>	6.5 (with no element below 6.0)	7.0 (with no elements below 6.0)	7.0 (with no elements below 6.0)	7.0 (with no elements below 6.0)	7.0 (with no elements below 6.0)	7.0 (with no elements below 6.0)
<b>TOEFL (iBT)</b>	88 (with no element below 19)	100 (with no elements below 21)	100 (with no elements below 21)	100 (with no elements below 21)	100 (with no elements below 21)	100 (with no elements below 21)

- All IELTS to be the academic version of the test.
- IELTS and TOEFL test results must not be more than 2 years old.





# Engineering

Welcome to the Faculty of Engineering 45

Entry requirements and tuition fees 46

Department of Chemical & Environmental Engineering

Department of Civil Engineering

Department of Electrical and Electronic Engineering

Department of Mechanical, Materials and Manufacturing Engineering



# Faculty of Engineering

## Welcome to the Faculty of Engineering

It is difficult to overstate the importance of engineering in our rapidly evolving world. Engineering solutions are all around us – portable devices, clean water and healthcare products that enable us to live longer and arguably, better lives. If we're to continue to innovate then we need the right people. People who can challenge, people who can create and most of all, people who can apply new knowledge in new products and new processes. These are just some of the things you will learn in one of our many engineering courses.

Undergraduate engineering programmes taught at the Malaysia Campus are undifferentiated from those taught in the UK, except Mechatronics which is only taught at the Malaysia Campus. These programmes are accredited by the UK Engineering Council, through the relevant professional institution. The Board of Engineers Malaysia (BEM) accreditation for the MEng courses is subject to re-approval, and all BEng courses are accredited by MQA. Following relevant industrial experience students who graduate with MEng can apply directly for Professional Engineer status. Students with a BEng degree require further learning to achieve Professional Engineer status.



## Entry requirements and tuition fees

Programme	Tuition fees	Country	Acceptable qualifications	Entry Requirements		
<b>BEng (Honours)/ MEng (Honours)</b>  Chemical Engineering  Chemical Engineering with Environmental Engineering	RM44,100 per year		A-Levels	ABB, including Mathematics and either Physics or Chemistry, excluding General Studies		
			IB Diploma	30 points, including 5 points in Mathematics (HL) and 5 points in either Physics or Chemistry (HL)		
		Australia	SAM/AUSMAT/HSC	ATAR (UAI)/TER/ENTER 90 including Mathematics, Physics and Chemistry		
		Canada	Canadian Pre-U	87% average based on 6 subjects, including Mathematics and Science subjects		
		India	Indian Certificate of Secondary Education (Class XII)*	• CBSE or ISC Boards	84% average (Mathematics and Physics / Chemistry)	
				• West Bengal Board	74% average (Mathematics and Physics / Chemistry)	
				• All other State Boards	89% average (Mathematics and Physics / Chemistry)	
		Iran	Pre-University Certificate <i>Before June 2012</i> / Year 12 Final High School Certificate <i>from June 2012</i> Year 11 Mathematics	16/20 with 16 in Mathematics and Physics or Chemistry		
		Civil Engineering  Electronic & Communications Engineering  Electronic & Computer Engineering  Electrical & Electronic Engineering  Mechatronic Engineering			A-Levels	BBB, including Mathematics and Physics, excluding General Studies
					IB Diploma	30 points, including 5 points in Mathematics (HL) and 5 points in Physics (HL)
Australia	SAM/AUSMAT/HSC			ATAR (UAI)/TER/ENTER 86 including Mathematics, Physics and Chemistry		
Canada	Canadian Pre-U			85% average based on 6 subjects, including Mathematics and Science subjects		
India	Indian Certificate of Secondary Education (Class XII)*			• CBSE or ISC Boards	80% average (Mathematics and Physics)	
				• West Bengal Board	70% average (Mathematics and Physics)	
				• All other State Boards	85% average (Mathematics and Physics)	
Iran	Pre-University Certificate <i>Before June 2012</i> / Year 12 Final High School Certificate <i>from June 2012</i> Year 11 Mathematics			16/20 (Mathematics and Physics)		



Mechanical Engineering	RM47,960		A-Levels	ABB, including Mathematics and Physics, excluding General Studies
			IB Diploma	30 points, including 5 points in Mathematics (HL) and 5 points in either Physics or Chemistry (HL)
		Australia	SAM/AUSMAT/HSC	ATAR (UAI)/TER/ENTER 90 including Mathematics, Physics and Chemistry.
		Canada	Canadian Pre-U	87% average based on 6 subjects, including Mathematics and Science subjects.
		India	Indian Certificate of Secondary Education (Class XII)* • CBSE or ISC Boards • West Bengal Board • All other State Boards	84% average (Mathematics and Physics / Chemistry) 74% average (Mathematics and Physics / Chemistry) 89% average (Mathematics and Physics / Chemistry)
Iran	Pre-University Certificate Before June 2012 / Year 12 Final High School Certificate from June 2012 Year 11 Mathematics	16/20 (Mathematics and Physics)		

\*India: required average score of the best 4 subjects, excluding local language and Environmental Education (ISC)

## POSTGRADUATE

Programme	Tuition fees	Entry Requirements
<b>MSc</b> Chemical Engineering	RM45,675	An upper second class honours degree (or equivalent) in related discipline.
Civil Engineering		
Electronic Communications and Computer Engineering		
Mechanical Engineering		

- Applicant must have graduated from an approved university.

Programme	Tuition fees	Entry requirements
<b>MPhil/PhD</b> Chemical & Environmental	RM42,445 per year	First class or upper second class honours degree in Engineering, Physics, Computer Science, Mathematics or other related disciplines.  This may be supplemented by an appropriate MSc.
Civil Engineering		
Electrical & Electronic		
Mechanical, Materials, & Manufacturing		

- Applicant must have graduated from an approved university.

## English language minimum requirements

### UNDERGRADUATE

Type of tests	Undergraduate programmes
<b>IELTS</b>	6.0 (with no elements below 5.5)
<b>TOEFL (iBT)</b>	79 (with no elements below 19)
<b>IB English</b>	IB English A1 or A2 (SL or HL): 4 points IB English B HL: 4 points IB English B SL: 5 points
<b>GCSE/ IGCSE English</b>	Grade C
<b>CBSC or ISC</b>	70%
<b>PTE (Academic)</b>	55 (Minimum 51)

### POSTGRADUATE / MPhil / PhD

Type of tests	Postgraduate programmes
<b>IELTS</b>	6.0 (with no elements below 5.5)
<b>TOEFL (iBT)</b>	79 (with no elements below 19)

- All IELTS to be the academic version of the test.
- IELTS and TOEFL test results must not be more than 2 years old.





# Science

Welcome to the Faculty of Science	51
Entry requirements and tuition fees	52
School of Biomedical Sciences	
School of Bioscience	
School of Pharmacy	
School of Computer Science	
School of Geography	
School of Psychology	

# Faculty of Science

## Welcome to the Faculty of Science

The Faculty of Science comprises six schools. Each school provides the opportunity from undergraduate to postgraduate and researcher level studies. The same courses are also offered in the UK with the same level of quality.

Being a world's Top 100 University, the University has been associated with Nobel Peace Prize winners in the invention of Magnetic Resonance Imaging (MRI).

**School of Biomedical Sciences** was launched in September 2010. In partnership with the School of Pharmacy, the School of Biomedical Sciences delivers physiology, pharmacology, clinical and therapeutic subjects to Pharmacy undergraduates.

**School of Biosciences** is internationally recognized in the areas of plant and food production, food quality and safety, nutrition and environmental protection.

**School of Pharmacy** offers the first Pharmacy degree that is fully accredited by the Royal Pharmaceutical Society of Great Britain (MPharm courses are now accredited by the General Pharmaceutical Council) in Malaysia. Established in 1925, the School has grown steadily and is now at the forefront of academic development and progress. With the combined intake at the UK and Malaysia Campuses, the School is now the largest of the UK Schools of Pharmacy.

**School of Computer Science** is committed to assist in upgrading the skills of experienced employees to allow them to participate fully in rapidly changing work environment. This advancement and proliferation of affordable high-tech devices has created an environment rife with both challenges and opportunities. With these challenges come great opportunities; opportunities waiting to be exploited by highly-trained enthusiastic Computer Science graduates.

**School of Geography** conducts research on a range of topics including environmental remote sensing, geospatial technologies, disaster management, environment and safety issues and tropical and wildlife ecology.

**School of Psychology** started at The University of Nottingham Malaysia Campus in September 2009. Psychology is the scientific study of mental processes. It is one of the broadest, most exciting, most relevant, and rapidly-changing fields of study.

## Entry requirements and tuition fees

Programme	Tuition fees	Country	Acceptable qualifications	Entry Requirements	
<b>BSc (Honours) Computer Science</b> Computer Science & Management Studies Software Engineering Computer Science with Artificial Intelligence (2+1)	RM38,590 per year		A-Levels	BCC, including a Science subject (Mathematics, Computing, Physics, Chemistry, Economics or Statistics). If you don't have any of these listed Science subjects we then require a grade B in GSCCE Mathematics	
			IB Diploma	26 points, including 5 points in Mathematics (SL)	
		Australia	SAM/AUSMAT/HSC	ATAR (UAI)/TER/ENTER 78	
		Canada	Canadian Pre-U	75% average based on 6 subjects, including Mathematics	
		India	Indian Certificate of Secondary Education (Class XII)* • CBSE/ISC Boards • West Bengal Board • All other State Boards	75% average (75% in a Science subject)	
				65% average (65% in a Science subject)	
				80% average (85% in a Science subject)	
		Science subjects include Mathematics, Computing, Physics, Chemistry, Economics or Statistics. If you don't have any of these listed subjects, we then require 70% in Class X Mathematics			
		Iran	Pre-University Certificate <b>Before June 2012</b> / Year 12 Final High School Certificate <b>from June 2012</b>	14/20 (14 in Science subject) Science subjects include Mathematics, Computing, Physics, Chemistry, Economics or Statistics	
		Plant Biotechnology Biotechnology Nutrition Environmental Science	RM44,100 per year		A-Levels
IB Diploma	28 points, with specified grades in Science subjects				
Australia	SAM/AUSMAT/HSC			ATAR (UAI)/TER/ENTER 82	
Canada	Canadian Pre-U			80% average based on 6 subjects	
India	Indian Certificate of Secondary Education (Class XII)* • CBSE/ISC Boards • West Bengal Board • All other State Boards Class X Mathematics			79% average (79% in 2 science subjects)	
				69% average (69% in 2 science subjects)	
				84% average (84% in 2 science subjects)	
70% Science subjects, preferably Biology & Chemistry. Other Science subjects such as Mathematics, Physics, and Geography are accepted					

\*India: required average score of the best 4 subjects, excluding local language and Environmental Education (ISC)



Programme	Tuition fees	Country	Acceptable qualifications	Entry Requirements
Plant Biotechnology Biotechnology Nutrition Environmental Science	RM44,100 per year	Iran	Pre-University Certificate <b>Before June 2012</b> / Year 12 Final High School Certificate <b>from June 2012</b>  Year 11 Mathematics	14/20 (14 in 2 science subjects)  Science subjects, preferably biology & chemistry. Other science subjects such as mathematics, physics, and geography are accepted  16/20
Psychology Psychology & Cognitive Neuroscience	RM38,750 per year		A-Levels  IB Diploma	BBB, in either Science or Arts subjects  BBC in either science or arts subjects Psychology A level is not required
		Australia	SAM/AUSMAT/HSC	ATAR (UAI)/TER/ENTER 86
		Canada	Canadian Pre-U	80% average based on 6 subjects
		India	Indian Certificate of Secondary Education (Class XII)* • CBSE/ISC Boards • West Bengal Board • All other State Boards Class X Mathematics	79% average 69% average 84% average 70%
		Iran	Pre-University Certificate <b>Before June 2012</b> / Year 12 Final High School Certificate <b>from June 2012</b>  Year 11 Mathematics	14/20  16/20
Biomedical Sciences	RM44,100 per year		A-Levels  IB Diploma	BBB in Chemistry and Biology excluding General Studies and Thinking Skills  30 points with specified grades in Science subjects. Grades of 5,5,5 in Chemistry, Biology and another relevant subjects
		Australia	SAM/AUSMAT/HSC	ATAR (UAI)/TER/ENTER 86 including Chemistry and Biology
		Canada	Canadian Pre-U	85% average based on 6 subjects including Chemistry and Biology
		India	Indian Certificate of Secondary Education (Class XII)* • CBSE/ISC Boards • West Bengal Board • All other State Boards Class X Mathematics	80% average (Chemistry and Biology) 70% average (Chemistry and Biology) 85% average (Chemistry and Biology) 70%
		Iran	Pre-University Certificate <b>Before June 2012</b> / Year 12 Final High School Certificate <b>from June 2012</b>  Year 11 Mathematics	16/20 (Chemistry and Biology)  16/20

\*India: required average score of the best 4 subjects, excluding local language and Environmental Education (ISC)

Programme	Tuition fees	Country	Acceptable qualifications	Entry Requirements
Pharmaceutical & Health Sciences	RM44,100 per year		A-Levels  IB Diploma	BBC with Grade B in Chemistry and 2 other Science subjects, such as Biology, Physics or Mathematics (SL)  28 points, including Chemistry and 5 points in Mathematics (SL)
		Australia	SAM/AUSMAT/HSC	ATAR (UAI)/TER/ENTER 82, including Mathematics, Physics and Chemistry
		Canada	Canadian Pre-U	80% average based on 6 subjects, including Mathematics and Science subjects
		India	Indian Certificate of Secondary Education (Class XII)* • CBSE/ISC Boards • West Bengal Board • All other State Boards Class X Mathematics	79% average (Chemistry and 2 other Science subjects) 70% average (Chemistry and 2 other Science subjects) 80% average (Chemistry and 2 other Science subjects) 70% Other Science subjects such as Biology, Mathematics and Physics
		Iran	Pre-University Certificate <b>Before June 2012</b> / Year 12 Final High School Certificate <b>from June 2012</b>  Year 11 Mathematics	14/20 (chemistry and 2 other science subjects)  16/20 Other science subjects such as Biology, Mathematics and Physics
MPharm (Honours) Master of Pharmacy (2+2) *Interview required	Year 1 & 2 RM48,565 per year Year 3 & 4 – UK £16,510 per year		A-Levels  IB Diploma	AAB/ABB in Chemistry and 2 other subjects, 1 of which must be a Science subject such as Biology or Physics or Mathematics, excluding General Studies and Thinking Skills.  32-34 points with grades of 6,6,5 at HL including Chemistry plus 1 subject from Biology, Mathematics or Physics in HL, and 3 other subjects in SL. Mathematics with further Mathematics counts as 1 HL and 1 SL subject
		Australia	SAM/AUSMAT/HSC	ATAR (UAI)/TER/ENTER 90, including Chemistry and Mathematics
		Canada	Canadian Pre-U	87% average based on 6 subjects. Chemistry must be above 85%
		India	Indian Certificate of Secondary Education (Class XII)* • CBSE/ISC Boards • West Bengal Board • All other State Boards Class X Mathematic	84-85% average (Chemistry and 2 other subjects) 74-75% average (Chemistry and 2 other subjects) 89-95% average (Chemistry and 2 other subjects) 80% Other subjects must include 1 Science subject such as Biology, Mathematics and Physics
		Iran	Pre-University Certificate <b>Before June 2012</b> / Year 12 Final High School Certificate <b>from June 2012</b>  Year 11 Mathematics	18/20 (chemistry and 2 other subjects) Other subjects must include 1 science subject such as Biology, Mathematics and Physics  18/20

\*India: required average score of the best 4 subjects, excluding local language and Environmental Education (ISC)

## POSTGRADUATE

Programme	Tuition fees	Entry requirements
MSc/PgDip/PgCert Crop Biotechnology	MSc: RM47,960 PGDip: RM31,974 PGCert: RM15,987	A minimum of second class honours degree in an Agricultural, Biological or other relevant science from an approved university. Relevant workplace experience may in some circumstances be considered.
MSc Crop Biotechnology & Entrepreneurship	RM47,960	An upper second class honours degree (or equivalent) in a relevant subject, such as Biology, Biotechnology and Crop Science. Relevant workplace experiences may in some circumstances be considered.
Computer Science & Entrepreneurship	RM47,960	An upper second class honours degree (or equivalent) in Computer Science or related discipline with a good foundation in programming.
Information Technology	RM47,960	A lower second class honours degree (or equivalent) in a Science or Engineering discipline.
Management of Information Technology	RM47,960	A lower second class honours degree (or equivalent). Significant relevant industrial experience may be considered.
Environmental Monitoring & Management	RM47,960	An upper or second class degree, or international equivalent in Science, Engineering or an environment-related subject.
Geospatial Science for Development Management	RM47,960	An upper second class honours degree (or international equivalent) or CGPA 3.0 in an appropriate subject. Mature applicants without standard entry requirements but with substantial and relevant experience may also be considered.

- Applicant must have graduated from an approved university.

## MPhil / PhD

Programme	Tuition fees	Entry requirements
Biomedical Sciences	RM47,960 per year	First class or upper second class Honours degree (or equivalent) in Biomedical Sciences, Pharmacology, Pharmacy or a related scientific discipline. This may also be complemented with an MSc in a relevant scientific discipline.
Biosciences (Molecular)	RM60,900 per year	First class or upper second class honours degree (or equivalent) or MSc in an Agricultural, Biological or other relevant science. Other equivalent qualifications will be considered on a case-by-case basis.
(Non-Molecular)	RM47,960 per year	
Computer Science	RM42,445 per year	First class or upper second honours degree (or equivalent) in Computer Science, Mathematics, or other suitably cognate discipline. This may be supplemented by an appropriate MSc. Other equivalent qualifications will be considered on a case-by-case basis.
Geography	RM47,960 per year	An upper second class honours degree in an appropriate subject.
Pharmacy	RM47,960 per year	An upper second class honours (or equivalent) degree or above in Pharmacy or a related scientific discipline. This may be supplemented by an appropriate MSc. Other equivalent qualifications and working experience will be considered on a case-by-case basis.
Psychology	RM47,960 per year	An upper second class honours degree (or equivalent) either in Psychology or in a related subject relevant to the chosen area. Other equivalent qualifications will be considered on a case-by-case basis.

- Applicant must graduate from an approved university.

## English language minimum requirements

### UNDERGRADUATE

Type of tests	Undergraduate programmes in SOCompSci, SOBioscience, SOPharmacy (BSc)	Undergraduate programmes in SOBiomSci	Undergraduate programmes SOPsych	Undergraduate programmes in SOPharmacy (MPharm)
IELTS	6.0 (with no elements below 5.5)	6.5 (with no elements below 6.0)	6.5 (with no elements below 6.0)	6.5 (with no elements below 6.0)
TOEFL (iBT)	79 (with no elements below 19)	88 (with no elements below 19)	88 (with no elements below 19)	88 (with no elements below 19)
IB English	IB English A1 or A2 (SL or HL): 4 points IB English B HL: 4 points IB English B SL: 5 points	IB English A1 or A2 (SL or HL): 4 points IB English B HL: 4 points IB English B SL: 5 points	IB English A1 or A2 (SL or HL): 5 points IB English B HL: 5 points IB English B SL: 5 points	IB English A1 or A2 (SL or HL): 4 points IB English B HL: 4 points IB English B SL: 5 points
GCSE / IGCSE English	Grade C	Grade C	Grade B	Grade C
CBSE / ISC	70%	75%	75%	75%
PTE (Academic)	55 (Minimum 51)	62 (Minimum 55)	62 (Minimum 55)	62 (Minimum 55)

### POSTGRADUATE

Type of tests	Postgraduate programme in SOBioscience (MSc Crop Biotechnology)	Postgraduate programme in SOBioscience (MSc Crop Biotechnology & Entrepreneurship)	Postgraduate programme in SOCompSci (MSc Information Technology)	Postgraduate programme in SOCompSci (MSc Management of Information Technology)	Postgraduate programme in SOCompSci (MSc Computer Science & Entrepreneurship)	Postgraduate programme in SOGeography
IELTS	6.0 (with no elements below 5.5)	6.5 (with no elements below 6.0)	6.0 (with no elements below 5.5)	6.0 (with no elements below 5.5)	6.5 (with no elements below 6.0)	6.5 (with no elements below 6.0)
TOEFL (iBT)	79 (with no elements below 19)	88 (with no elements below 19)	79 (with no elements below 19)	79 (with no elements below 19)	88 (with no elements below 19)	88 (with no elements below 19)

### MPhil / PhD

Type of tests	PhD in Biomedical Sciences	PhD in Biosciences	PhD in Computer Science	PhD in Geography	PhD in Pharmacy	PhD in Psychology
IELTS	6.5 (with no elements below 6.0)	6.0 (with no elements below 5.5)	6.0 (with no elements below 5.5)	6.0 (with no elements below 5.5)	6.5 (with no elements below 6.0)	6.5 (with no elements below 6.0)
TOEFL (iBT)	88 (with no elements below 19)	79 (with no elements below 19)	79 (with no elements below 19)	79 (with no elements below 19)	88 (with no elements below 19)	88 (with no elements below 19)

- All IELTS to be the academic version of the test.
- IELTS and TOEFL test results must not be more than 2 years old.



# Applying for a MPhil / PhD

The University of Nottingham Malaysia Campus offers a wide range of research degrees across all faculties and most schools and departments.

If you are interested in pursuing your PhD at The University of Nottingham Malaysia Campus then here is some information about the procedure and application process that should help you.

## 1. Choosing a topic

Consider which topic or subject area you are interested in and to draft a brief outline that you could email or discuss with a potential supervisor.

## 2. Finding a potential supervisor

It is advisable to devote some time and effort into finding a supervisor before you submit your application as this will reduce the amount of time taken overall.

The first step is to look through the University website and go to the relevant School or Faculty page for your topic and browse the research interests of our academics.

Once you have found somebody who appears suitable then you are ready to begin the process of application.

## 3. Proposal

The PhD proposal should demonstrate an awareness of your chosen topic and an indication that you have considered the parameters of your research. Your potential supervisor will respond to you on your next course of action.

## 4. Application

Send in a formal application. You may refer to page 59 How to apply.





# How to... apply

## Applying to The University of Nottingham Malaysia Campus

The University academic year will commence in September with an intake for all programmes. It is advisable for international applicants to submit their application two months before the intake. Applications received after this date will still be processed but we will not be able to assure you that the visa processes and accommodation availability will be completed in time for the last date of registration.

Applications cannot be processed unless all the required forms and documents have been completed and sent in and application fee payment made.

Below table indicate the intakes that are available in the University of Nottingham Malaysia Campus.

Intakes	February*	April	June	July	September	December
Foundation (2-semester)					●	
Foundation (3-semester)		●		●		
Undergraduate	●				●	
Postgraduate	●				●	
Postgraduate (Education)			●			●

\*Selected programmes only

All year round:

- MPhil and PhD programmes except for Business; Economics; and Politics, History and International Relations

### HOW TO APPLY?

You can apply online via our application portal: [apply.nottingham.edu.my](http://apply.nottingham.edu.my)

#### 1. Submitting your application

- Completed application and application fee form
- English language qualification
- Relevant documents [bio page of passport, reference letters (if required), transcript (forecast / actual)]
- Payment of USD50 application fee

#### 2. Email Confirmation

- Confirming eligibility in 10 working days

#### \*3. Acceptance

- Acceptance letter
- RM1,000 acceptance fee (non-refundable and will be used as part of tuition fee)

#### 4. Offer Letter

- Conditional or UnConditional Offer to be issued to student upon receiving the acceptance fee

#### 5. Student Visa

- Declaration form
- Copy of medical check-up and reports (five pages)
- Visa application of RM500 (first payment and non-refundable)
- Processing of student visa will take at least four working weeks

#### 6. Accommodation

- Choose your accommodation of choice
- Confirm the booking with deposit (amount depending on the room rental)

#### 7. Visa Approval

- Visa Approval Letter will be sent to you one month before intake
- Obtaining an entry visa (if required)
- Purchase of air ticket

#### 8. Airport Pick-up

- Inform Student Visa Office on Airport Pick-up info
- Visa Office representative will pick student from airport and send you to your accommodation

#### 9. Report at IO and Registration Day

- Offer letter
- Proof of payment
- Original transcripts
- Two passport sized photographs
- Original medical check-up report and x-ray
- Visa application of RM500 (second payment)

\*Payment is part of tuition fee and application for conditional and unconditional offer holders.

### What are we looking for?

Consideration will be given to whether applicants will be able to fulfill the objectives of the programme of study and achieve the standards required.

A range of factors additional to, and in some cases instead of formal examination of results is considered in the selection process.

\*These can include:-

- the personal statement and reference
- additional evidence of achievement, motivation and potential as gathered through interview or assessment of written materials or additional selection tests;
- other factors as appropriate to the discipline, such as employment or volunteer work in relevant fields and sustained critical engagement with relevant issues.

\*The above requirement varies according to the level of study during application

Completed application forms can be submitted either by post, fax or e-mail:

The International Admissions Office (Non-Malaysian)  
The University of Nottingham Malaysia Campus  
Jalan Broga, 43500 Semenyih, Selangor, Malaysia

t: +603 8924 8668 / 8000

f: +603 8924 8002

e: [int-admissions@nottingham.edu.my](mailto:int-admissions@nottingham.edu.my)





# How to... finance your degree

## Guide to the costs of study

### Living costs

In order to live in Malaysia, we recommend that you should have an income of around USD500 per month. This should be able to cover accommodation, food, books and student's individual entertainment activities. It does not include the cost of international travelling expenses.

The cost of living in Semenyih is low compared to most cities in Malaysia and also to the major cities of the world. Whilst you are at the University, your spending patterns may vary from your usual spending patterns and it therefore can be difficult to work out how much you are likely to need to spend as a student.

Below is a brief estimate of some of the main expenses. You will, however, need to think about your own spending style in order to make an accurate budget estimate.

	<b>Accommodation</b>	
	USD1,800 – 2,050	
	+	
	<b>Food</b>	
	USD1,500 – 1,800	
	+	
	<b>Books &amp; other</b>	
	USD300 – 500	
	+	
	<b>Transportation &amp; Entertainment</b>	
	USD1,050 – 2,000	
<b>=</b>	<b>Yearly</b>	<b>or Monthly</b>
	USD4,650 – 6,350	USD400 – 500
<b>USD1 = RM3.05</b>		
(The exchange rate will fluctuate from time to time)		

Please remember that the above figures are estimated and may rise by the next academic year. They are based on a student living expenses studying in The University of Nottingham Malaysia Campus.

## Course related costs

Course related costs will vary from course to course and you may find some of them are subsidized by your school or department. It will cost USD300 – 500 per year depending on the subjects that you are taking. This estimate includes books, photocopying & stationery. You may be able to buy equipment (for Science and Engineering students) second-hand or borrow books from the library. Please check with your school which costs are likely to apply to your course.

### Paid work

International students who enter Malaysia on a Student Visa have limited opportunities to undertake paid employment. Although technically there are some legal opportunities for students to work, however, the Malaysia immigration department has set the limitations for international students to undertake any form of paid employment while studying in Malaysia.

You are only allowed to work 20 hours per week in a restricted category of jobs during long vacations. Under no circumstances should you undertake unofficial employment as this could result in your student visa being revoked. If you have any questions, please contact the International Office for advice or visit: [www.nottingham.edu.my/International/LifeinMalaysia/Working.aspx](http://www.nottingham.edu.my/International/LifeinMalaysia/Working.aspx).

### Part-time programmes

Non-Malaysians with a Working Permit /Employment Pass / Malaysia My Second Home /PR holders ONLY are allowed to apply for the part-time programmes. Please refer to the International Office for more information.

## Tuition fee payment options

Only MPhil & PhD Research students have to pay 100% of one year's tuition fee upon registration.

Early payment discount: Students are entitled to a 2% early payment discount upon registration for full settlement of tuition fees payable to the University for the academic year. Several other options of payment are available for students online at [www.nottingham.edu.my/Applications/Fees/Paymentoffees.aspx](http://www.nottingham.edu.my/Applications/Fees/Paymentoffees.aspx) and as per below:

### Bank draft

- Payable to "The University of Nottingham in Malaysia Sdn Bhd"
- To submit before arrival to campus
- To provide copy of bank draft during registration

### E-payment (via credit card/online)

- Log on to: <https://epay.nottingham.edu.my>
- Follow through the instructions of payment on the screen
- To produce a copy of payment proof during registration
- To pay using credit card during registration

### Telegraphic transfer

- Bank: HSBC Bank Malaysia Berhad
- Address: Main Branch, 2 Leboh Ampang, 50100 Kuala Lumpur
- Bank account: 301-879391-101
- Swift code: HBMBMYKL
- To produce a copy of payment proof during registration

### Note:

**CASH PAYMENTS ARE NOT ACCEPTED.** All cheques and bank transfer advices must be forwarded to the Finance Office, The University of Nottingham Malaysia Campus for official receipts to be issued (Please indicate your full name and course of study on the back).

For any enquiries, kindly contact the Finance Office  
t: +603 8924 8048  
e: [finance-office@nottingham.edu.my](mailto:finance-office@nottingham.edu.my)

\*\*The actual tuition fees payable are in Ringgit Malaysia and any shortfall or excess from any translation of foreign currencies to Ringgit Malaysia and bank charges must be borne by the student.

## Scholarships and Financial assistance

The University grants scholarships to deserving and academically excellent students. Applicants are selected based on their academic achievement. Further information on the scholarships available can be found online at [www.nottingham.edu.my/ProspectiveStudents/Scholarships](http://www.nottingham.edu.my/ProspectiveStudents/Scholarships) by following the 'Prospective Students' link on our University website.

## Scholarship

### • High Achievers Scholarships (HAS)

It is an automatic scholarship for Foundation and Undergraduate programmes of study. Students who meet the academic criteria will automatically be awarded the scholarship. They will only have to pay 75% of their tuition fees.

Students must submit their Offer Acceptance forms and pay their Offer Acceptance fee before the HAS may be awarded to them.

The HAS is awarded for only one academic year and is not applicable for the progressing academic year. Students may subsequently be eligible at the point of progression for the Dean's Excellence Scholarships (DES).

See more:

[www.nottingham.edu.my/ProspectiveStudents/Scholarships/Sponsorinformation/HighAchievers](http://www.nottingham.edu.my/ProspectiveStudents/Scholarships/Sponsorinformation/HighAchievers)

### • Developing Solutions Scholarship

The Developing Solutions Scholarship Fund will reach out to those students who have the potential to make a real difference to the development and prosperity of their home countries. Twenty-five Awards of 100% Tuition Fee Scholarships are available for new students from the developing and Third World countries around the world to registering on taught based Masters programmes at The University of Nottingham Malaysia Campus for 2012/13 intakes, in the areas related to Science, Technology and Education.

See more:

[www.nottingham.edu.my/ProspectiveStudents/Scholarships/Sponsorinformation/DevelopingSolutions.aspx](http://www.nottingham.edu.my/ProspectiveStudents/Scholarships/Sponsorinformation/DevelopingSolutions.aspx) for more details.

### • Dean's Excellence Scholarship

The Dean's Excellence Scholarships (DES) amounts to a fee reduction of 25 per cent. These scholarships are awarded to top achieving students, usually the top 10 per cent of the schools' high achievers at the point of progression for each academic year, ie from:

- Foundation to Year 1
- Year 1 to Year 2
- Year 2 to Year 3

### • Automatic Scholarships

We offer several automatic scholarships for alumni of The University of Nottingham, children of alumni, siblings, spouses and alumni of Universitas 21 (U21) Institutions.

Students with outstanding academic results can also seek sponsorship from other Sponsoring Bodies. You are advised to visit the University's website for the complete list of Sponsoring bodies.

# How to... apply for accommodation

## University accommodation

### Facilities on-campus

Each hall offers fully furnished bedrooms with Internet connection in every room. There are pantry facilities to make snacks and light meals. Air-conditioning is included selected ensuite rooms.

The halls have a warden/tutor, who is responsible for your welfare. If you have personal or accommodation related problems, he or she will be more than happy to help.

There is a separate meter for air-conditioning usage in the single room with ensuite bathroom which will be read monthly and charged to the student.

Coin-operated machines for washing and drying are available on campus. Charges are on par or lower than outside. We have made arrangements for a laundry operator to provide services of washing and ironing.

### Meals on-campus

The halls are on a self-catering basis and only meant for very light cooking and heating up. You have to provide your own utensils, cutlery and crockery. Remember this is a HALAL campus. There will be 2 floors in Pangkor Wing that have been designated as 'Vegetarian' Wings. However, this will depend on demand. If the demand is not there, we shall put in a separate 'vegetarian' fridge for exclusive use.

### Internet

All on-campus accommodation comes with complimentary internet connection. High-speed internet facilities are available with minimum charges. For students living in Halls of Residence, high speed internet connection is available via the Student Network Services (SNS). The SNS is a service offered by Information Services in The University of Nottingham Malaysia Campus. Students who subscribe to the SNS are given an internet access line (in the Halls of Residence) and Wi-Fi access on campus (restricted to certain buildings).

### Couple and Family Accommodation

If you are intending to come to the University with a partner or family, you should be aware that only a limited number of off-campus university housing is available. There is no on-campus accommodation for couples or families. We recommend that you arrive before your family in order to find the right accommodation before they join you. Alternatively, we will be able to help you to find your accommodation in the private sector. If you are emailing us, please put 'couple/family housing' in the subject box.

### Accessible accommodation

If you have any specific medical requirements or disability, then you will need to provide us with details of these in your application. This will be taken into consideration in order of priority and availability. You can request to be placed in a suitable university arranged accommodation by filling in the 'Individual Requirements' section of the application form. You also need to provide written supporting documentation with your application.

### Private accommodation

For those who want to stay among close friends, there is the independence of fully furnished houses available at TTS2, TTS5 and Wifi Precint (TTS4) for rent. Each house is fully furnished with fully equipped kitchens. Rent ranges from RM1500-RM2000.

Utility bills are not included and no other services are provided except transport and grass cutting. Each house can accommodate 6-8 students depending on the number of rooms. There is a maximum to the number of students per house. Please refer to the Accommodation Office for more information on private accommodation.

The Malaysia Campus offers a variety of accommodation options. Students can choose from On-Campus Halls of Residence which are situated at various locations around the University; most within walking distance of campus facilities.

Finding the right place to live whilst you study is an important consideration in your choice of university. Our Accommodation Office is here to offer free and friendly service in helping you finding the accommodation that not only suits your needs but lets you get on with university life - both studying and having fun!

All on-campus accommodation is fully furnished and has the same level of service provided including: housekeeping, internet facilities and security.

We want your time with us to be as enjoyable and as hassle-free as possible. That is why our accommodation not only provides somewhere safe and comfortable to stay, but we make sure that you are well looked after.

See more: [www.nottingham.edu.my/accommodation](http://www.nottingham.edu.my/accommodation)



#### DISCLAIMER:

The Off-Campus Accommodation is deemed a private arrangement between you as a student and the service providers of the Off-Campus Accommodation. The University is under no obligation to either party on any matter whatsoever. The University acts as a facilitator to provide information to students in the off-campus accommodation and will not be held liable in any way for either party.



### Halls of Residence (On-Campus Accommodation)

The University offers on-campus accommodation within its Halls of Residence. These Halls are situated on the western side of the University and it is a 5-minute walk to the Student Association and a 10 minute walk to the academic areas. The Halls of Residence are virtually identical in all aspects and offer different room types to choose from, with prices and facilities to match. They room types ranges from single ensuite bathrooms to double decker bedrooms.

Please note: The number of single rooms are limited and it is necessary to apply early to secure these rooms.

Accommodation fees range from approximately RM335 – RM625 per month, including electricity and water bills. The rental rates are as follows:

Room Type	Estimated Floor Area (m <sup>2</sup> per room)	Monthly Rental (per person)
Single ensuite bathroom with A/C	13.23	RM625
Single shared ensuite bathroom with A/C	12.96	RM565
Single shared ensuite bathroom	12.96	RM465
Single shared bathroom in 5 room flat with A/C	9.49	RM535
Single shared bathroom in 5 room flat	9.49	RM435
Twin shared in 6 bedded flat	12.00	RM410
Four shared bedroom	48.24	RM355
Double decker shared ensuite bathroom with A/C	13.23	RM425
Double decker shared ensuite bathroom	13.23	RM375

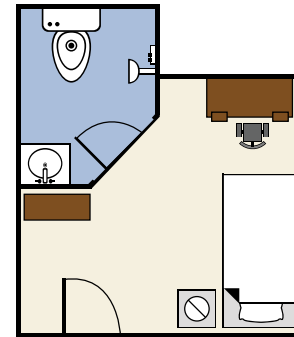
### Next steps:

- You will receive your Accommodation Form by email or courier together with your Offer Letter upon successful application to the University. Complete the Accommodation Form and email or send it to the Accommodation Office.
- We shall make the accommodation offer to you by email once you have confirmed the acceptance of the offer to study and upon receipt of the Acceptance Fees. Please attach the copy of the official receipt as proof of payment of the Acceptance Fees together with the accommodation form for verification purposes.
- Once you have received the accommodation offer, please read the Accommodation Offer Letter carefully as it contains details about payments to guarantee your room, terms and conditions and other relevant information regarding your stay here.
- Rooms are at first-come, first-served basis and subject to our Accommodation Policy.
- When applying, please make sure you fill in your application carefully and in full so that we can process it quickly for you. Please be extra careful that your email address is properly written as our initial reply will be by email. As popular accommodation can go quickly, we encourage you to apply as early as you can and to be careful not to make any mistakes when completing the form.
- Should the on-campus accommodation be unavailable, the Accommodation Office will provide the student with a choice of privately owned and managed off-campus accommodation.
- The student may then choose from the list of privately owned and managed off-campus accommodation and the Accommodation Office will forward the new requests to the off-campus Accommodation Managers.
- If you do not hear from us in 14 working days after your application is sent, please contact us by phone or email at:

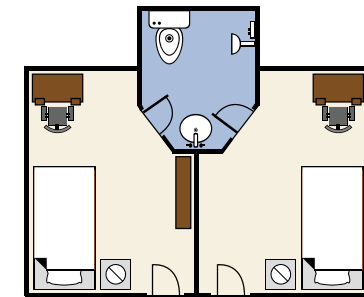
t: +603 8924 8640/8649

f: +603 8924 8002

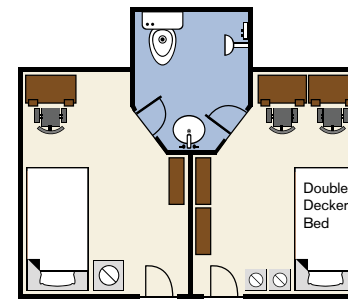
e: [accommodation@nottingham.edu.my](mailto:accommodation@nottingham.edu.my)



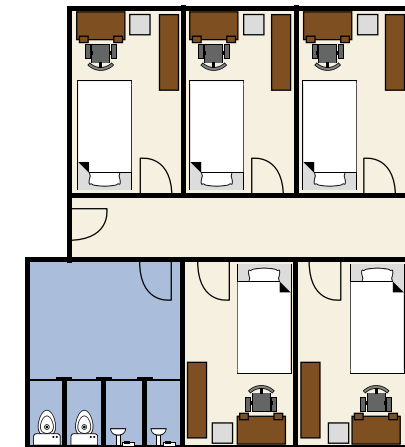
Single ensuite bathroom



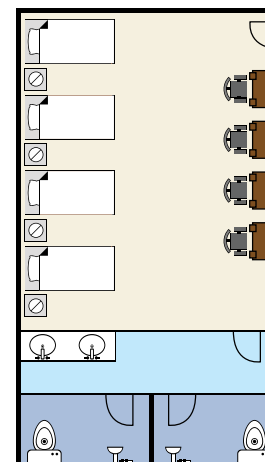
Single shared ensuite bathroom



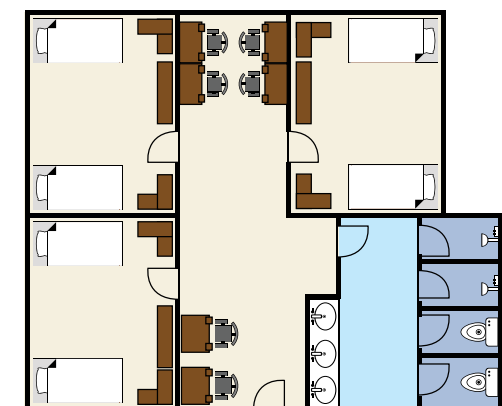
Double decker shared ensuite bathroom



Single shared bathroom in 5 room flat



Single Four shared bedroom bathroom



Twin shared in 6 bedded room

# How to... find us

## By commuter train

The nearest railway station is in Kajang Town (9km from the campus) where the KTM (Keretapi Tanah Melayu / Malayan Railway) Commuter and KTM National train stop. There is a KTM service every 15 minutes between 6am and 11pm daily taking you to the KL Sentral which is Kuala Lumpur's transportation hub because of KL's main transportation line starts there.



[www.ktmb.com.my](http://www.ktmb.com.my)

## Nottingham shuttle bus

A free shuttle bus service is available for students to and from the KTM station in Kajang to the campus. The Nottingham shuttle buses will only pickup and drop off staff and students at only designated places. It is anticipated that the journey time from Kajang KTM to the University is approximately 45 minutes. The nearest bus terminal is in Semenyih (3km from the campus) where public service buses to and from Kajang and Kuala Lumpur can be taken.

## By bus (approx)

The nearest bus terminal is located at Semenyih (Semenyih Sentral) where public bus services to and from Kajang and Kuala Lumpur are available. In Kajang, the main bus station which is the closest is in Metro Kajang. A journey from Semenyih to Kajang costs approximately RM1.00 to RM1.30. Public buses are also available from Kajang (Terminal Kajang) to Kuala Lumpur (Pasar Seni station) cost approximately RM3.00 and the service are provided by RapidKL.

Alternatively in KL, the buses also pickup or drop off outside of Kota Raya (next to the Pudu Raya bus terminal). A new bus terminal, Plaza Rakyat is planned to replace neighbouring Puduraya. [www.rapidkl.com.my](http://www.rapidkl.com.my)

## By taxi (approx)

Taxis are readily available from Kajang to the campus as well as taxis from Semenyih to the campus. The taxi fare from Kajang to the campus normally costs not more than RM30 per trip and taxi fare from Semenyih to the campus is approximately RM10. Please be aware that taxis in Kajang do not operate by meter and you will need to negotiate the cost of the trip before embarking.

## By car (approx)

It is a 40 minutes to an hour drive from Kuala Lumpur. The distance from KLCC to Malaysia Campus is about 45km. Use either Cheras-Kajang Highway, North-South Expressway and Kajang SILK Highway or use SILK Highway towards Sungai Long.

Take the exit to Semenyih, 2101A. Pass Sunway Semenyih on your left (about 6km away) and continue onto Jalan Semenyih. The Campus is located at Jalan Broga which is 3km away from Semenyih Town.

## From KL:

Cheras-Kajang Highway: Pay RM1.00 at Batu 9 Toll.

North-South Expressway: Pay RM1.80 at Kajang Exit.

Kajang SILK Highway: Pay RM1.00 at Sg. Ramal Toll and RM1.00 at Sg. Long-Semenyih Toll.

From MRR2 and Sungai Besi Highway: Pay RM1.30 at Mines Selatan Toll and RM1.00 at Sg. Long-Semenyih Toll.

\*Public transportation schedule and fares are subject to change from time to time. Please refer to respective service providers for further information.





Reminder



# How to... contact us

All enquiries relating to studying at The University of Nottingham Malaysia Campus as an international student should be directed to the International Office.

Our office hours are from Monday to Friday, 9.00am to 5.30pm.

## International Office

### Enquiry Centre

**The University of Nottingham Malaysia Campus**  
Jalan Broga, 43500 Semenyih, Selangor Darul Ehsan,  
Malaysia.  
t: +603 8924 8778 / 8000  
f: +603 8924 8005  
e: [international.enquiries@nottingham.edu.my](mailto:international.enquiries@nottingham.edu.my)



UNMCIntOffice



UNMCIntOffice



[www.youtube.com/uonmalaysia](http://www.youtube.com/uonmalaysia)

Jan 2013

#### Prospectus disclaimer

Every effort has been made to ensure that the information contained in this prospectus is fair and accurate at the time of printing. However, the courses and services covered by this prospectus are subject to occasional changes, and no guarantee can be given that these will not be made following publication and / or after candidates have been admitted to the University. Admittance to the University is subject to the requirement that students will comply with the University's registration procedure and will duly observe the charter, statutes, ordinances and regulations of the University.

The University reserves the right to alter any information without prior notice should the need arise.

